



## VENEER STONE MOLDS



### VS 101



#### VS 101/1

Mold size: 3.34 sq. ft  
 Measurements: 23" x 21" x 2"  
 Mold sections: 5  
 Section dimensions: 20" x 4" x 1 1/2"



#### VS 101/2

Mold size: 3.34 sq. ft  
 Measurements: 23" x 21" x 2"  
 Mold sections: 10  
 Section dimensions:  
 5 sections 12" x 4" x 1 1/2"  
 5 sections 8" x 4" x 1 1/2"



#### VS 101/3

Mold size: 3.34 sq. ft  
 Measurements: 23" x 21" x 2"  
 Mold sections: 5  
 Section dimensions:  
 20" x 4" x 1 1/2"



#### VS 101/4

Mold size: 2 sq. ft  
 Measurements: 21" x 14" x 2"  
 Mold sections: 3  
 Section dimensions:  
 20" x 4" x 1 1/2"



#### VS 101/5 Flat and Corner

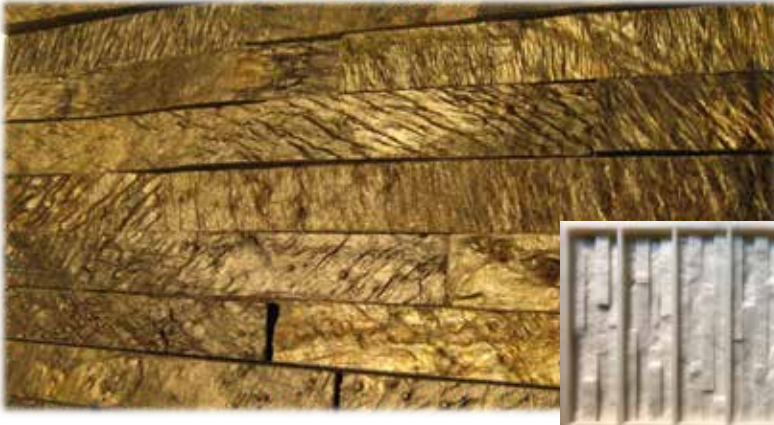
Mold size: 2 sq. ft  
 Measurements: 21" x 14" x 2"  
 Mold sections: 6  
 Section dimensions:  
 3 sections 12" x 4" x 1 1/2"  
 3 sections 8" x 4" x 1 1/2"



#### VS 101/7 Corner

Mold size: 1.61 sq. ft  
 Measurements: 23 3/4" x 9 1/2" x 5"  
 Mold sections: 5  
 Section dimensions: 4" x 7 1/2" x 3 1/4"  
 Stone thickness approximately 1 1/2" (4 cm)

## VS 401



### VS 401/1, VS 401/2

Mold size: 2,47 sq. ft  
 Measurements: 22" x 16 1/2" x 1"  
 Mold sections: 5  
 Approx. size of section: 16" x 4" x 3/4"

### VS 401/3 Corner and Flat

Mold size: 1,61 sq. ft  
 Measurements: 17" x 13 1/2" x 1"  
 Mold sections: 3  
 Approx. size of section: 16" x 4" x 3/4"

## VS 402



### VS 402/1, VS 402/2. Flat

Mold size: 2,47 sq. ft  
 Measurements: 26 3/4" x 20" x 1"  
 Mold sections: 3  
 Section dimensions: 25 1/2" x 6" x 3/4"

### VS 402/3 Corner

Mold size: 1,61 sq. ft  
 Measurements: 25 1/2" x 20" x 1"  
 Mold sections: 6  
 Section dimensions:  
 3 sections 17 3/4" x 6" x 3/4"  
 3 sections: 6" x 6" x 3/4"

## VS 201



### VS 201/1, VS 201/2

Mold size: 2,76 sq. ft  
 Measurements: 23 1/2" x 17" x 1"  
 Mold sections: 2  
 Size of each section: 22 1/2" x 8" x 1/2"

## VS 301



### VS 301/1, VS 301/2

Mold size: 2,47 sq. ft  
 Measurements: 22" x 16 1/2" x 1"  
 Mold sections: 5  
 Approx. size of Section: 16" x 4" x 3/4"

## VS 501



### VS 501/1. 2 in 1 mold: Corner and Flat

Mold size: 3.12 sq. ft  
 Measurements: 26" x 20" x 1 1/2"  
 Mold sections: 3  
 Approx. size of each Section: 6" x 25" x 1"

### VS 501/2, VS 501/3, VS 501/4, VS 501/5, VS 501/6

Mold size: 3.12 sq. ft  
 Measurements: 26" x 20" x 1 1/2"  
 Mold sections: 3  
 Approx. size of each Section: 6" x 25" x 1"



## VS 601



### VS 601/1, VS 601/2. Flat

Mold size: 3,34 sq. ft  
 Measurements: 23" x 21" x 2"  
 Mold sections: 5  
 Section dimensions: 20" x 4" x 2"

### VS 601/3 Corner

Mold size: 1,61 sq. ft  
 Measurements: 17" x 13 1/2" x 1"  
 Mold sections: 3  
 Approx. size of Section: 16" x 4" x 3/4"



## VS 701



### VS 701/1, VS 701/2,

### VS 701/3, VS 701/4, VS 701/5 Flat

Mold size: 3,34 sq. ft  
 Measurements: 23" x 21" x 2"  
 Mold sections: 5  
 Section dimensions: 20" x 4" x 2"

### VS 701/6 Corner

Mold size: 2,9 sq. ft  
 Measurements: 23 1/2" x 19 3/4" x 1 1/2"  
 Mold sections: 6  
 Section dimensions:  
 3 sections: 14 3/4" x 6" x 1"  
 3 sections: 7" x 6" x 1"

## VS 801 Bamboo



### VS 801/1, VS 801/2. Flat

Mold size: 3,34 sq. ft  
 Measurements: 23" x 23" x 1 3/4"  
 Mold sections: 1  
 Section dimensions: 22" x 22" x 1"

## VS 901



### VS 901/1

Mold size: 3.34 sq. ft  
 Measurements: 23" x 23" x 2"  
 Mold sections: 25  
 Section dimensions: 4" x 4" x 1"

### VS 901/2, VS 901/3, VS 901/4, VS 901/5

Mold size: 3.76 sq. ft  
 Measurements: 24" x 23" x 2"  
 Mold sections: 20  
 Section dimensions:  
 15 sections: 6" x 4" x 1"  
 5 sections: 4" x 4" x 1"



### VS 901/6 Corner

Mold size: 3,13 sq. ft  
 Measurements: 23 1/2" x 9" x 5"  
 Mold Sections: 5  
 Section dimensions:  
 5 sections: 7 1/4" x 4" x 1" &  
 2 3/4" x 4" x 1"



## BRICK STONE MOLDS



### BS 311



**BS 311/1, BS 311/2, BS 311/3 Flat**  
 Mold size: 3 sq. ft  
 Measurements: 25 ½" x 17 ¾" x 1"  
 Mold sections: 18  
 Approx. size of Section: 7 ¾" x 2 ¼" x ¾"

**BS 311/4 Corner**  
 Mold size: 1,93 sq. ft  
 Measurements: 22 ¾" x 9 ¼" x 4 ½"  
 Mold sections: 8  
 Approx. size of Section: 7 ¾" x 2 ¼" x ¾"

### BS 312

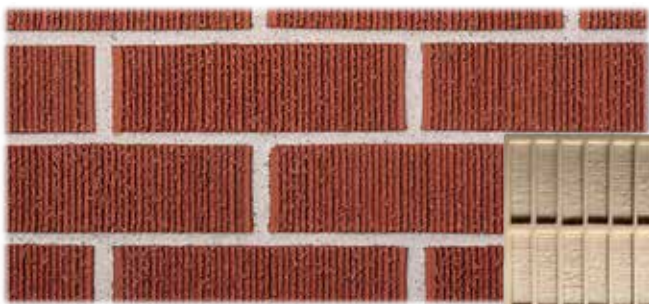


**BS 312/1, BS 312/2, BS 312/3 Flat**  
 Mold size: 3 sq. ft  
 Measurements: 25 ½" x 17 ¾" x 1"  
 Mold sections: 18  
 Approx. size of Section: 7 ½" x 2 ¼" x ½"

**BS 312/4 Corner**  
 Mold size: 1,93 sq. ft  
 Measurements: 23" x 9" x 4 ¾"  
 Mold sections: 8  
 Approx. size of Section: 7 ½" x 2 ¼" x ½"

# BRICK STONE MOLDS

## BS 313

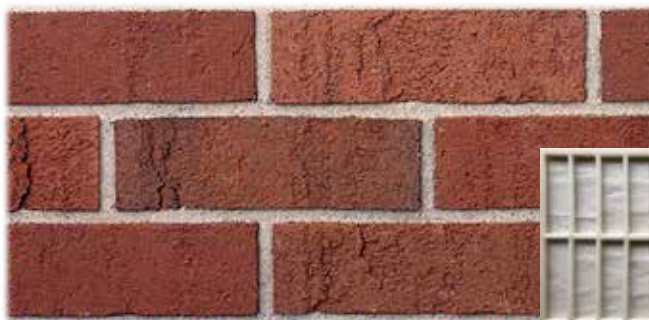


**BS 313/1, BS 313/2 Flat**  
 Mold size: 3 sq. ft  
 Measurements: 25 1/2" x 17 3/4" x 1"  
 Mold sections: 18  
 Approx. size of Section: 7 1/2" x 2 1/4" x 1/2"



**BS 313/3 Corner**  
 Measurements: 22 3/4" x 9 1/4" x 4 3/4"  
 Mold sections: 8  
 Section dimensions: 7 1/2" x 2 1/4" x 1/2"

## BS 511



**BS 511/1, BS 511/2, BS 511/3 Flat**  
 Mold size: 3 sq. ft  
 Measurements: 25" x 18" x 1"  
 Mold sections: 18  
 Approx. size of Section: 7 3/4" x 2 1/4" x 1/2"



## BS 611



**BS 611/1, BS 611/2, BS 611/3 Flat**  
 Mold size: 3 sq. ft  
 Measurements: 24" x 16 1/2" x 1"  
 Mold sections: 18  
 Approx. size of Section: 7 1/2" x 2 1/4" x 1/2"

**BS 611/4 Corner**  
 Mold size: 1,93 sq. ft  
 Measurements: 21 1/2" x 8 1/2" x 4 1/2"  
 Mold sections: 8  
 Approx. size of Section: 7 1/2" x 2 1/4" x 1/2"

## BS 612



**BS 612/1, BS 612/2, BS 612/3 Flat**  
 Mold size: 3 sq. ft  
 Measurements: 25 1/2" x 18 1/4" x 1"  
 Mold sections: 16  
 Approx. size of Section: 8" x 2 1/2" x 1/4"

**BS 612/4 Corner**  
 Mold size: 1,93 sq. ft  
 Measurements: 23" x 9 1/4" x 4 1/2"  
 Mold sections: 7  
 Approx. size of Section: 8" x 2 1/2" x 1/4"

# BRICK STONE MOLDS

## BS 613



**BS 613/1, BS 613/2, BS 613/3 Flat**  
Mold size: 3 sq. ft  
Measurements: 23 ½" x 17 ¼" x 1"  
Mold sections: 14  
Approx. size of Section: 7 ½" x 2 ¾" x ½"

**BS 613/4 Corner**  
Mold size: 1.93 sq. ft  
Measurements: 22 ¾" x 9 ¼" x 4 ½"  
Mold sections: 7  
Approx. size of Section: 7 ½" x 2 ¾" x ½"

## BS 711



**BS 711/1, BS 711/2, BS 711/3 Flat**  
Mold size: 3 sq. ft  
Measurements: 24" x 16 ½" x 1"  
Mold sections: 18  
Approx. size of Section: 7 ½" x 2 ¼" x ½"

**BS 711/4 Corner**  
Mold size: 1.93 sq. ft  
Measurements: 21 ½" x 8 ½" x 4 ½"  
Mold sections: 8  
Approx. size of Section: 7 ½" x 2 ¼" x ½"

## BS 713



**BS 713/1, BS 713/2, BS 713/3 Flat**  
Mold size: 3 sq. ft  
Measurements: 25 ½" x 17 ¼" x ¾"  
Mold sections: 18  
Approx. size of Section: 7 ½" x 2 ¼" x ½"

**BS 713/4 Corner**  
Mold size: 1.93 sq. ft  
Measurements: 21 ¼" x 7 ½" x 4 ½"  
Mold sections: 8  
Approx. size of Section: 7 ½" x 2 ¼" x ½"

## VS 811



**BS 811/1, BS 811/2, BS 811/3 Flat**  
Mold size: 3.33 sq. ft  
Measurements: 24" x 20" x 1"  
Mold sections: 16  
Approx. size of Section: 9" x 2 ¼" x ½"

**BS 811/4 Corner**  
Mold size: 1.93 sq. ft  
Measurements: 21 ½" x 8 ½" x 4 ½"  
Mold sections: 8  
Approx. size of Section: 9" x 2 ¼" x ½"

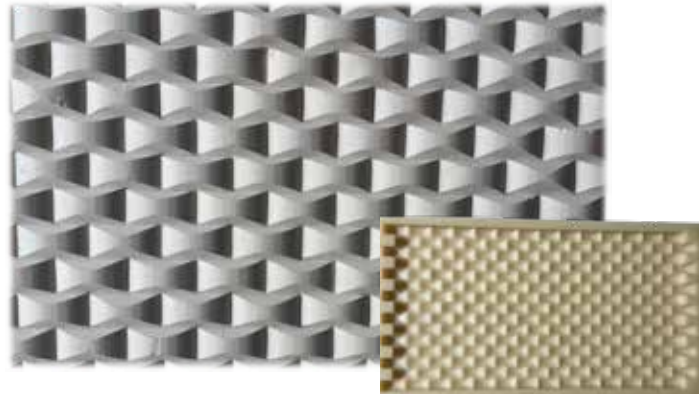
# WALL PANEL MOLDS

## BS 821



**MS 821 Flat**  
Mold size: 2 sq. ft  
Measurements: 24 ½" x 13 ¾" x 1"  
Mold sections: 1  
Approx. size of Section: 23" x 11 ¾" x ½"

## BS 822



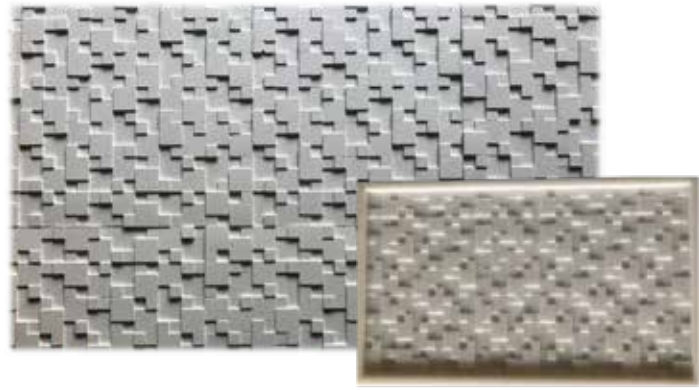
**MS 822 Flat**  
Mold size: 2 sq. ft  
Measurements: 24 ½" x 13 ¾" x 1"  
Mold sections: 1  
Approx. size of Section: 23" x 11 ¾" x ½"

## BS 823



**MS 823 Flat**  
Mold size: 2 sq. ft  
Measurements: 23 ¾" x 13" x 1"  
Mold sections: 1  
Approx. size of Section: 22" x 11 ½" x ¼"

## BS 824



**MS 824/1, MS 824/2 Flat**  
Mold size: 2 sq. ft  
Measurements: 23 ¾" x 12 ½" x ½"  
Mold sections: 1  
Approx. size of Section: 23 ¾" x 12 ¼" x ¼"

## BS 831



**MS 831/1, MS 831/2, MS 831/3 Flat**  
Mold size: 2 sq. ft  
Measurements: 25 ¾" x 13 ½" x ¾"  
Mold sections: 1  
Approx. size of Section: 24 ¾" x 12" x ½"

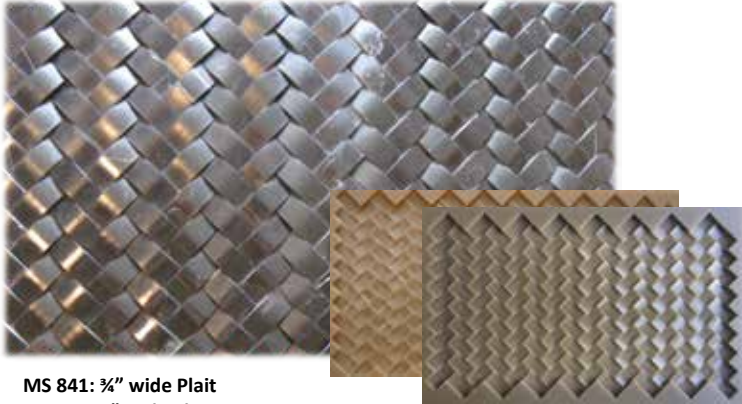
## BS 832



**MS 832 Flat**  
Mold size: 2 sq. ft  
Measurements: 25 ½" x 13 ¾" x ¾"  
Mold sections: 1  
Approx. size of Section: 24" x 11 ¾" x ½"

# WALL PANEL MOLDS

## MS 841, MS 842



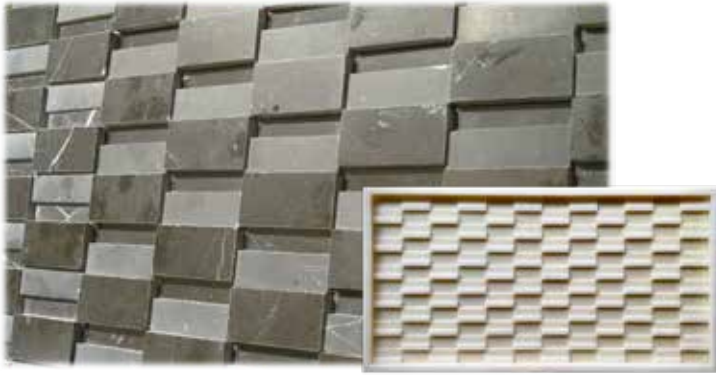
**MS 841: 3/4" wide Plait**  
**MS 842: 1" wide Plait**  
Mold size: 2 sq. ft  
Measurements: 24" x 13" x 1"  
Mold sections: 1  
Approx. size of Section: 22" x 12" x 1/2"

## MS 851



**MS 851 Flat**  
Mold size: 2 sq. ft  
Measurements: 25" x 13" x 1"  
Mold sections: 1  
Approx. size of Section: 24" x 12" x 1/2"

## MS 861



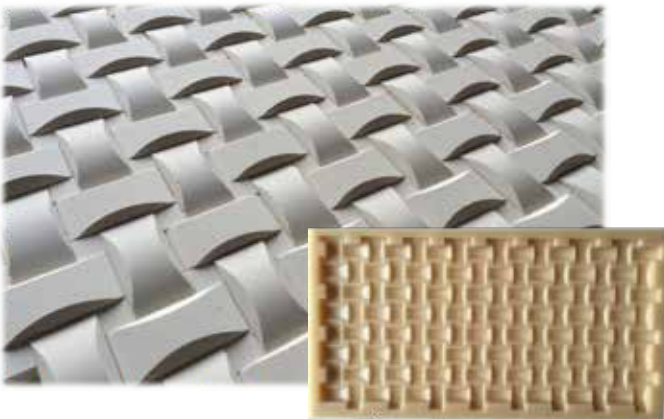
**MS 861 Flat**  
Mold size: 2 sq. ft  
Measurements: 24" x 13" x 1"  
Mold sections: 1  
Approx. size of Section: 23" x 12" x 1/2"

## MS 862



**MS 862 Flat**  
Mold size: 2 sq. ft  
Measurements: 25" x 13" x 1"  
Mold sections: 1  
Section dimensions: 3 1/2" x 12" x 1/2"

## MS 863



**MS 863**  
Mold size: 2 sq. ft  
Measurements: 25 1/4" x 13 1/4" x 1"  
Mold sections: 1  
Approx. size of Section: 23 1/4" x 12" x 1/2"

## MS 871



**MS 871/1, MS 871/2**  
Mold size: 2 sq. ft  
Measurements: 25" x 13" x 1"  
Mold sections: 1  
Approx. size of Section: 24" x 12" x 1/2"



## VS 1001



**VS 1001. Flat**  
 Mold size: 4 sq. ft  
 Measurements: 24 ½" x 24 ½" x 1 ¼"  
 Mold sections: 1  
 Section dimensions: 23" x 23" x 1"

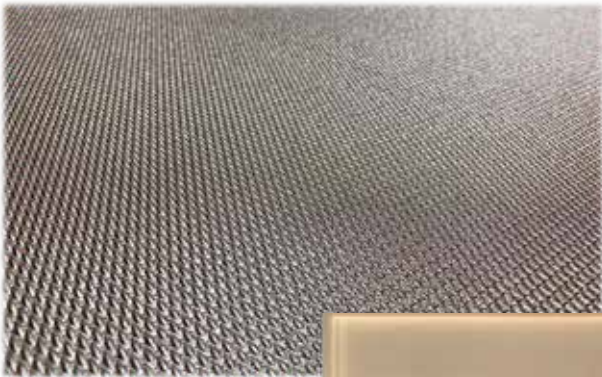
## VS 1011



**VS 1011/1 Flat**  
 Mold size: 3.8 sq. ft  
 Measurements: 30 ½" x 18" x 1"  
 Mold sections: 1  
 Section dimensions: 28 ½" x 16 ½" x ½"

**VS 1011/2 Flat**  
 Mold size: 2,26 sq. ft  
 Measurements: 24 ½" x 13 ½" x 1"  
 Mold sections: 1  
 Section dimensions: 23 ½" x 11 ¼" x ½"

## PM 1020, Wall and Floor Panel



**PM 1020**  
 Mold size: 5.4 sq. ft  
 Measurements: 41 ½" x 21 ¾" x 1 ½"  
 Mold sections: 1  
 Section dimensions: 39 ½" x 19 ¾" x 1"

# LIMESTONE MOLDS

## LS 1101



**LS 1101 Flat**  
 Mold size: 3.44 sq. ft  
 Measurements: 25" x 20" x 2"  
 Mold sections: 6  
 Approx. size of Section: 12" x 6" x 1/2"



## LS 1111



**LS 1111/6 Flat**  
 Mold size: 2.37 sq. ft  
 Measurements: 25 1/2" x 13 1/4" x 4"  
 Mold sections: 4  
 Approx. size of Section: 11 1/2" x 5 1/4" x 3 1/2"



**LS 1111/7 Flat**  
 Mold size: 2.26 sq. ft  
 Measurements: 24" x 13 1/4" x 4"  
 Mold sections: 10  
 Approx. size of Section:  
 4 sections 6" x 6" x 3 1/2"  
 6 sections 6" x 3" x 3 1/2"



**LS 1111/1, LS 1111/2, LS 1111/3 Flat**  
 Mold size: 3.23 sq. ft  
 Measurements: 24 1/2" x 19" x 1 1/2"  
 Mold sections: 6  
 Approx. size of Section: 10 3/4" x 6" x 1"

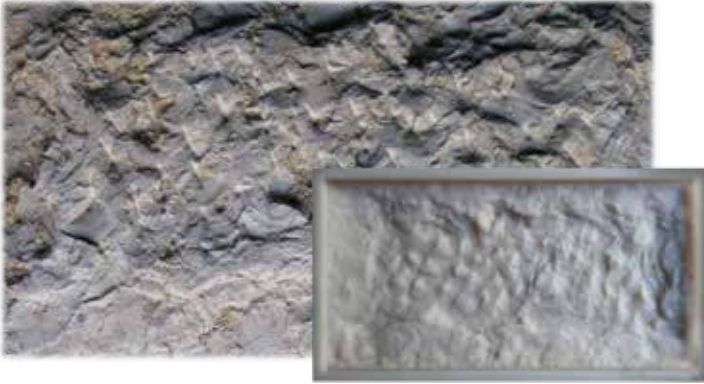


**LS 1111/4 Flat**  
 Mold size: 3.23 sq. ft  
 Measurements: 24 1/2" x 19" x 1 1/2"  
 Mold sections: 18  
 Approx. size of Section:  
 6 sections 6" x 6" x 1"  
 12 sections 6" x 3" x 1"



**LS 1111/5 Corner**  
 Measurements: 20" x 7 1/2" x 4"  
 Mold sections: 3  
 Approx. size of Section: 5 3/4" x 6 3/4" + 2" x 1"

## LS 1201



LS 1201/1, LS 1201/2, LS 1201/3, LS 1201/4

Mold size: 4.19 sq. ft

Measurements: 24" x 14" x 2"

Mold sections: 1

Approx. size of Section: 22" x 12" x 2"

## LS 1301



LS 1301/1, LS 1301/2 Flat

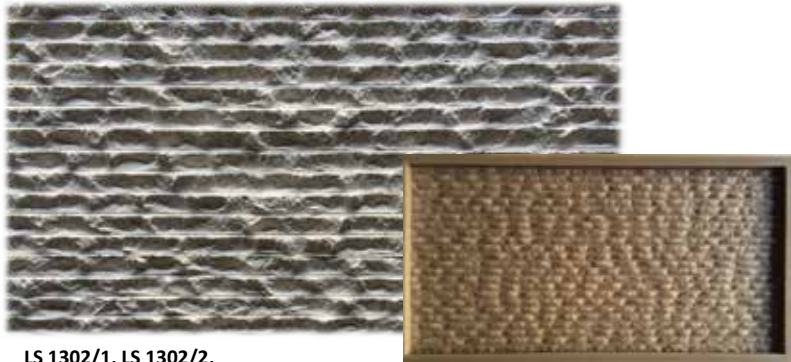
Mold size: 1.83 sq. ft

Measurements: 24" x 12" x 2"

Mold sections: 1

Approx. size of Section: 22" x 12" x ½"

## LS 1302



LS 1302/1, LS 1302/2,  
LS 1302/3, LS 1302/4 Flat

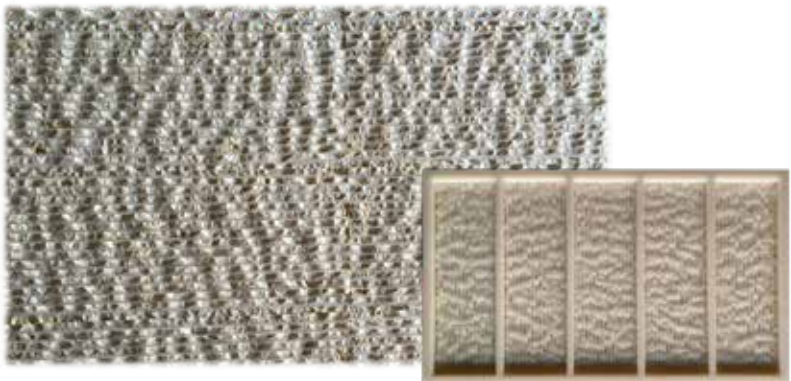
Mold size: 2 sq. ft

Measurements: 24 ¾" x 13" x 1"

Mold sections: 1

Approx. size of Section: 23 ¼" x 11 ¾" x ½"

## LS 1303



LS 1303 Flat

Mold size: 4.66 sq. ft

Measurements: 22 ¾" x 13 ¼" x 1"

Mold sections: 5

Approx. size of Section: 12" x 4" x ½"



# LEDGESTONE MOLDS



## LS 2001



**LS 2001/8 Corner**  
 Measurements: 24" x 13 1/2" x 7"  
 Mold sections: 6  
 Approx. size of Section:  
 5 sections: 11" x 5" x 1 1/2"  
 1 section: 10 1/4" x 5" x 1 1/2"

**LS 2001/9 Corner**  
 Measurements: 24" x 11" x 7"  
 Mold sections: 3  
 Approx. size of Section:  
 8" x 5" x 1 1/2"  
 8" x 7" x 1 1/2"  
 10 1/4" x 8 1/4" x 1 1/2"

**LS 2001/2 \* LS 2001/3 \* LS 2001/4 \* LS 2001/5 \* LS 2001/6 \* LS 2001/7 \* LS 2001/8**  
**Molds measurements: 24" x 24" x 2 1/2"**

**LS 2001/2 Flat**  
 Mold's sections: 7  
 Section dimensions:  
 5" x 2 1/2" x 1 1/2"  
 6" x 8" x 1 1/2"  
 6" x 9" x 1 1/2"  
 9 1/2" x 7" x 1 1/2"  
 13" x 6" x 1 1/2"  
 13" x 7" x 1 1/2": 2 sections

**LS 2001/3 Flat**  
 Mold's sections: 9  
 Section dimensions:  
 5 1/2" x 2 1/2" x 1 1/2"  
 5 1/2" x 2" x 1 1/2"  
 6 1/2" x 12" x 1 1/2"  
 7 1/2" x 6" x 1 1/2"  
 8" x 6" x 1 1/2"  
 10" x 7" x 1 1/2"  
 10 1/2" x 7" x 1 1/2"  
 11" x 6 1/2" x 1 1/2"  
 12 1/2" x 10" x 1 1/2"

**LS 2001/4**  
 Mold's sections: 10  
 Section dimensions:  
 6" x 4 1/2" x 1 1/2"  
 7" x 4 1/2" x 1 1/2"  
 7" x 7" x 1 1/2"  
 7 1/2" x 6" x 1 1/2"  
 8" x 4" x 1 1/2"  
 8 1/2" x 4" x 1 1/2"  
 9" x 4 1/2" x 1 1/2"  
 9 1/2" x 4 1/2" x 1 1/2"  
 10 1/2" x 5 1/2" x 1 1/2"  
 12" x 5" x 1 1/2"

**LS 2001/5 Flat**  
 Mold's sections: 10  
 Section dimensions:  
 4" x 2 1/2" x 1 1/2"  
 4" x 4" x 1 1/2"  
 6" x 5 1/2" x 1 1/2"  
 7" x 6 1/2" x 1 1/2": 2 sections  
 8" x 3 1/2" x 1 1/2"  
 9" x 6" x 1 1/2"  
 9" x 7" x 1 1/2"  
 9" x 7 1/2" x 1 1/2"  
 10" x 6" x 1 1/2"

**LS 2001/6 Flat**  
 Mold's sections: 10  
 Section dimensions:  
 7" x 4 1/2" x 1 1/2": 2 sections  
 8" x 3" x 1 1/2"  
 8" x 5" x 1 1/2"  
 9" x 5" x 1 1/2"  
 9" x 6 1/2" x 1 1/2"  
 9" x 7" x 1 1/2"  
 9 1/2" x 6 1/2" x 1 1/2"  
 9 1/2" x 7" x 1 1/2"  
 10" x 3 3/4" x 1 1/2"

**LS 2001/7 Flat**  
 Mold's sections: 9  
 Section dimensions:  
 5" x 4" x 1 1/2"  
 7" x 4" x 1 1/2"  
 7" x 5 1/2" x 1 1/2"  
 7" x 6 1/2" x 1 1/2"  
 8" x 6 1/2" x 1 1/2"  
 9" x 7" x 1 1/2": 2 sections  
 9 1/2" x 9" x 1 1/2"  
 10" x 6" x 1 1/2"

# RIVER ROCK MOLDS

## LS 2001



**RS 4001/1**  
 Mold size: 4.66 sq. ft  
 Measurements: 28" x 24" x 2 1/2"  
 Mold sections: 18  
 Section dimensions:  
 2" to 2 1/2" thick  
 9" x 7" largest to  
 4" x 3" smallest.

**RS 4001/2**  
 Mold size: 4.66 sq. ft  
 Measurements: 28" x 24" x 2 1/2"  
 Mold sections: 12  
 Section dimensions:  
 1 to 1 1/2" thick  
 the individual sizes  
 from 10" x 7" largest to 5" x 6" smallest

**RS 4001/3 Corner**  
 Measurements: 27" x 8" x 6 1/2"  
 Mold sections: 3  
 Section dimensions:  
 5" x 9" x 2 1/2"  
 6" x 7" x 2 1/2"  
 6" x 7" x 2 1/2"

*All dimensions are approximate*

## CS 3001



**CS 3001/1**  
 Mold size: 4.66 sq. ft  
 Measurements: 28" x 24" x 2 1/2"  
 Mold sections: 14  
 Section dimensions:  
 12 1/2" x 3 1/4" x 2 1/4"  
 12" x 6 1/4" x 2 1/4"  
 12 1/2" x 4" x 2 1/4" - 2 sections  
 11 3/4" x 3" x 2 1/4"  
 12" x 2 3/4" x 2 1/4"  
 10" x 2 3/4" x 2 1/4"  
 9 1/4" x 1 1/2" x 2 1/4"  
 9 1/4" x 5" x 2 1/4" - 2 sections  
 12" x 5 1/4" x 2 1/4"  
 2 1/2" x 2 1/2" x 2 1/4"

**CS 3001/7 Corner**  
 Measurements: 24 1/2" x 10 1/2" x 6 1/2"  
 Mold sections: 4  
 Approx. size of Section:  
 9" x 6" x 2 1/4" - 2 sections  
 9" x 4" x 2 1/4"  
 9" x 5" x 2 1/4"



**CS 3001/8 Corner**  
 Measurements: 25 1/2" x 10 1/2" x 5 1/2"  
 Mold sections: 6  
 Approx. size of Section:  
 9" x 3" x 2 1/4"  
 9" x 4 1/2" x 2 1/4" - 2 sections  
 9" x 4" x 2 1/4" - 2 sections  
 9" x 5" x 2 1/4"



**CS 3001/2 \* CS 3001/3 \* CS 3001/4 \* CS 3001/5 \* CS 3001/6**  
 Mold Size 4 sq. ft \* Molds measurements - 24" x 24" x 2 1/2"

**CS 3001/2**  
 Mold sections: 8

Section dimensions:  
 7 1/2" x 5" x 2 1/4"  
 7" x 4 1/2" x 2 1/4"  
 8" x 6" x 2 1/4" - 2 sections  
 13" x 6" x 2 1/4" - 2 sections  
 14" x 4" x 2 1/4" - 2 sections

**CS 3001/3**  
 Mold sections: 11

Section dimensions:  
 8" x 6" x 2 1/4" - 4 sections  
 13" x 4" x 2 1/4" - 4 sections  
 8 1/2" x 3" x 2 1/4"  
 8" x 4" x 2 1/4"  
 13" x 3" x 2 1/4"

**CS 3001/4**  
 Mold sections: 10

Section dimensions:  
 7" x 6" x 2 1/4" - 2 sections  
 7" x 3" x 2 1/4" - 2 sections  
 7" x 2" x 2 1/4" - 2 sections  
 14 1/2" x 3" x 2 1/4" - 2 sections  
 14" x 4" x 2 1/4"  
 14" x 5" x 2 1/4"

**CS 3001/5**  
 Mold sections: 10

Section dimensions:  
 9 1/2" x 3" x 2 1/4"  
 10 1/2" x 5" x 2 1/4" - 2 sections  
 10 1/2" x 2" x 2 1/4"  
 10 1/2" x 4" x 2 1/4"  
 10" x 3" x 2 1/4"  
 10" x 4 1/2" x 2 1/4"  
 10" x 6" x 2 1/4"  
 11" x 4" x 2 1/4"  
 11" x 5" x 2 1/4"

**CS 3001/6**  
 Mold sections: 11

Section dimensions:  
 9 1/2" x 3" x 2 1/4"  
 9 1/2" x 4" x 2 1/4"  
 9 1/2" x 5" x 2 1/4"  
 10" x 2 1/2" x 2 1/4"  
 10" x 3" x 2 1/4" - 2 sections  
 10" x 5 1/4" x 2 1/4"  
 10" x 6" x 2 1/4"  
 12" x 2 1/2" x 2 1/4"  
 12" x 4" x 2 1/4"  
 12" x 4 1/2" x 2 1/4"

## CS 3101



**CS 3101/1**  
 Measurements: 23 1/2" x 23 1/2" x 1 3/4"  
 Mold's sections: 6  
 Sections dimensions:  
 5 3/4" x 11 3/4" x 1 1/2"  
 8 3/4" x 11 3/4" x 1 1/2"  
 6" x 6" x 1 1/2" - 2 sections  
 9" x 9" x 1 1/2"  
 12" x 9" x 1 1/2"

**CS 3101/2**  
 Measurements: 23 1/2" x 23 1/2" x 1 3/4"  
 Mold's sections: 7  
 Sections dimensions:  
 6" x 6" x 1 1/2"  
 6 1/4" x 6 1/4" x 1 1/2"  
 8 3/4" x 5 3/4" x 1 1/2"  
 8 3/4" x 9" x 1 1/2"  
 9" x 5 3/4" x 1 1/2"  
 11 3/4" x 6" x 1 1/2"  
 11 1/2" x 8 3/4" x 1 1/2"

**CS 3101/3**  
 Measurements: 23 1/2" x 23 1/2" x 1 3/4"  
 Mold's sections: 5  
 Sections dimensions:  
 3" x 3" x 1 1/2"  
 8 3/4" x 11 3/4" x 1 1/2"  
 9" x 12" x 1 1/2"  
 11 3/4" x 9" x 1 1/2"  
 12" x 9 1/4" x 1 1/2"

**CS 3101/4 Corner**  
 Mold size: 23" x 10" x 3/4"  
 Mold sections: 3  
 Section dimensions:  
 3" x 9" x 5"  
 6" x 9" x 5"  
 12" x 9" x 5"

## WS 5001



**WS 5001/1**  
 Mold size: 3.65 sq.ft  
 Measurements: 24" x 23" x 1 1/2"  
 Mold sections: 4  
 Sections dimensions:  
 23" x 5" x 1"

## WS 5001



**WS 5002/1, 5002/2, 5002/3**  
 Mold size: 3.87 sq.ft  
 Measurements: 24" x 23" x 1 1/2"  
 Mold sections: 4  
 Sections dimensions:  
 23" x 5" x 1"

## WS 5010



**WS 5010/1**  
 Mold size: 3.22 sq. ft  
 Measurements: 17" x 18" x 2 1/4"  
 Mold sections: 3  
 Section dimensions:  
 15 3/4" x 5 1/4" x 1 3/4"

**WS 5010/2**  
 Mold size: 0.73 sq. ft  
 Measurements: 15 3/4" x 6 3/4" x 2"  
 Mold sections: 1  
 Section dimensions: 15" x 6 3/4" x 1 3/4"

## WS 5901



**WS 5901/1, WS 5901/2**  
 Mold's diameter: 16" and 2" thick  
 Mold sections: 1  
 Section's dimensions: 15" x 1 1/2"

## WS 5902



**WS 5902**  
 Mold measurements: 25" x 19 1/4" x 2 1/2"  
 Sections (logs) - 12  
 Each section dimensions: 5 1/4" x 5 1/4" x 1 1/2"



## SS 5101



### SS 5101/1

Mold size: 3.98 sq. ft  
 Measurements: 29" x 20" x 2"  
 Mold sections: 6  
 Sections dimensions:  
 12" x 7" x 1 1/2"  
 9" x 6 1/2" x 1 1/2"  
 8" x 5 1/2" x 1 1/2"  
 11" x 5 1/2" x 1 1/2"  
 6 1/2" x 10" x 1 1/2"  
 7" x 10" x 1 1/2"

## SS 5201



### SS 5201

Mold size: 2.58 sq. ft  
 Measurements: 19 1/2" x 20" x 2 1/4"  
 Mold sections: 6  
 Section dimensions: 9" x 6" x 1 1/2"



## SS 5301



SS 5301/1, SS 5301/2, SS 5301/3  
 Mold size: 2 sq. ft  
 Measurements: 25 1/2" x 13 1/4" x 3"  
 Mold sections: 2  
 Section dimensions:  
 11 3/4" x 11 3/4" x 2"



## SS 5302



SS 5302/1, SS 5302/2, SS 5302/3, SS 5302/4  
 Mold size: 2 sq. ft  
 Measurements: 24 3/4" x 13" x 1 1/2"  
 Mold sections: 1  
 Section dimensions:  
 23 1/4" x 11 3/4" x 1 1/2"



## SS 5304



SS 5304/1, SS 5304/2,  
 SS 5304/3, SS 5304/4  
 Mold size: 2 sq. ft  
 Measurements: 25 1/2" x 13" x 1"  
 Mold sections: 2  
 Section dimensions:  
 11 3/4" x 11 3/4" x 1/2"



## SS 5305



SS 5305/1, SS 5305/2,  
 SS 5305/3, SS 5305/4, SS 5305/5  
 Mold size: 2 sq. ft  
 Measurements: 25" x 13" x 1"  
 Mold sections: 1  
 Section dimensions:  
 23 1/2" x 11 3/4" x 1/2"



# PAVING & STEPPING STONE MOLDS



## SS 5401



**SS 5401**  
 Mold size: 2 sq. ft  
 Measurements: 24" x 12" x 1"  
 Mold sections: 8  
 Sections dimensions:  
 6" x 6" x ½"



## SS 5501



**SS 5501**  
 Mold size: 2.8 sq. ft  
 Measurements: 23" x 17" x 2"  
 Mold sections: 10  
 Sections dimensions:  
 8" x 4" x 1 ¼"



## PS 5503



### PS 5503/1, PS 5503/2, PS 5503/3, PS 5503/4

Mold size: 3 sq. ft  
 Measurements: 25 ¼" x 18" x 2"  
 Mold sections: 12  
 Sections dimensions:  
 8" x 3 ½" x 2"

## SS 5601



**SS 5601/1**  
 Mold size: 3.22 sq. ft  
 Measurements: 25" x 17" x 2"  
 Mold sections: 1  
 Section dimensions: 24" x 16" x 1 ½"



**SS 5601/3**  
 Mold size: 3 sq. ft  
 Measurements: 26" x 17" x 2"  
 Mold sections: 3  
 Section dimensions: 16" x 8" x 1 ½"



**SS 5601/2**  
 Mold size: 2 sq. ft  
 Measurements: 17" x 17" x 2"  
 Mold sections: 1  
 Section dimensions: 16" x 16" x 1 ½"



**SS 5601/4**  
 Mold size: 3.22 sq. ft  
 Measurements: 25" x 17" x 2"  
 Mold sections: 6  
 Section dimensions: 8" x 8" x 1 ½"

## SS 5701



**SS 5701/1**  
 Mold size: 2.47 sq. ft  
 Measurements: 19" x 19" x 1 ¼"  
 Mold sections: 1  
 Section dimensions:  
 17" x 17" x 1 ¼"

**SS 5701/2**  
 Mold size: 2.47 sq. ft  
 Measurements: 19" x 19" x 1 ¼"  
 Mold sections: 2  
 Section dimensions:  
 17" x 8 ½" x 1 ¼"

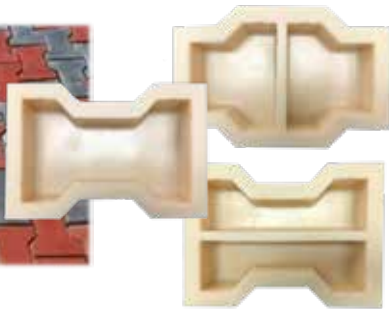
**SS 5701/3**  
 Mold size: 2.47 sq. ft  
 Measurements: 19" x 19" x 1 ¼"  
 Mold sections: 1  
 Section dimensions:  
 17" x 17" x 1 ¼"

**SS 5701/4**  
 Mold size: 2.47 sq. ft  
 Measurements: 19" x 19" x 1 ¼"  
 Mold sections: 4  
 Section dimensions:  
 8 ½" x 8 ½" x 1 ¼"

**SS 5701/5**  
 Mold size: 3.77 sq. ft  
 Measurements: 27 ½" x 19 ½" x 1 ¼"  
 Mold sections: 1  
 Section dimensions:  
 26" x 17" x 1 ¼"



## PS 1019

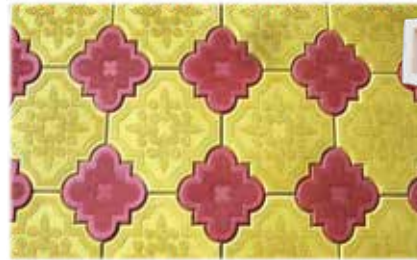


**PS 1019/1R**  
Mold inside measurements:  
8 3/4" x 5 1/2" x 2 1/2"

**PS 1019/2R**  
Mold inside measurements: 8 3/4" x 5 1/2" x 2 1/2"  
Sections: 2  
Each Section inside dimension:  
4 1/4" x 5 1/2" x 2 1/2"

**PS 1019/3R**  
Mold inside measurements:  
8 3/4" x 5 1/2" x 2 1/2"  
Sections: 2  
Section dimension:  
8 3/4" x 2 3/4" x 2 1/2"

## PS 7719



**PS 7719/1**  
Mold inside measurements:  
11 3/4" x 11 3/4" x 1 3/4"

**PS 7719/3**  
Mold inside measurements:  
8 1/2" x 8 1/2" x 1 3/4"

**PS 7719/2**  
2 Sections  
Each section inside measurements:  
5 3/4" x 5 3/4" x 1 3/4"

**PS 7719/4**  
2 Sections  
Each section inside measurements:  
4 1/4" x 4 1/4" x 1 3/4"

## PS 12049



**PS 12049/1, PS 12049/3**  
Mold (Stone) thickness: 2.36"  
Mold inside measurement:  
8" x 4" x 2 1/4"

## PS 13039



**PS 13039**  
Mold (Stone) thickness: 2.36"  
Mold inside measurement:  
8 3/4" x 5 1/2" x 2 1/4"

## PS 17052



**PS 17052/1**  
Mold's (stone) thickness: 2.36"  
Mold inside measurement:  
10 1/4" x 7" x 2 1/4"



**PS 17052/2**  
Mold inside measurement:  
10 1/4" x 7" x 2 1/4"  
Sections: 2  
Each Section Dimension:  
5" x 7" x 2 1/4"



**PS 17052/3**  
Mold inside measurement:  
10 1/4" x 7" x 2 1/4"  
Sections: 2  
Each Section Dimension:  
10 1/4" x 3 1/4" x 2 1/4"

## PS 20106



**PS 20106/1**  
Mold inside measurements:  
13" x 8 1/2" x 1 3/4"

**PS 20106/3**  
Mold inside measurements:  
9 3/4" (diameter) x 1 3/4"

**PS 20106/2**  
Mold inside measurements:  
13" x 6 1/4" x 1 3/4"

**PS 20106/4**  
2 Sections  
Each section inside measurements:  
9 3/4" x 4 3/4" x 1 3/4"

## PS 21104



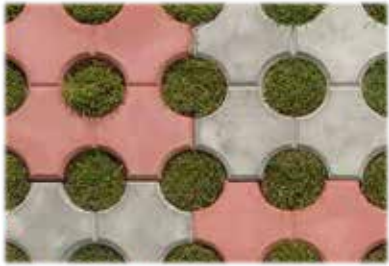
**PS 21104**  
 Mold (Stone) thickness: 2.36"  
 Mold inside measurement:  
 8 ¾" x 4" x 2 ¼"

## PS 21107



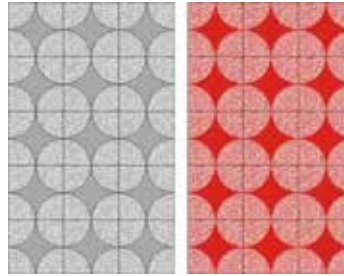
**PS 21107/1, PS 21107/2**  
 Mold (Stone) thickness: 2.36"  
 Mold inside measurement:  
 12 ¾" x 4 ¼" x 2 ¼"

## PS 25096



**PS 25096**  
 Mold's Size: 12" x 12" x 3"  
 Stone Size: 10 ½" x 10 ½" x 2 ½"

## PS 30081



**PS 30081**  
 Mold's (stone) thickness: 2"  
 Mold inside measurement: 12" x 12" x 2"

## SS 60100 Tactile Warning Surface



**SS 60100/1, SS 60100/2**  
 Mold dimensions: 13 ¼" x 13 ¼"  
 Tactile warning surface dimensions:  
 11 ½" x 11 ½" x 2"

**SS 60100/3**  
 Mold dimensions: 38 ¾" x 26 ¼" x 2 ¾"  
 Tactile warning surface dimensions:  
 36 ½" x 24" x 2"

## PS 50101 Drain Mold



**PS 50101**  
 Molds dimensions: 15 ¼" x 11 ½"  
 Approximate measurement of the finished item:  
 13 ½" x 9 ¾" x 3 ¼"

# CAP STONE MOLDS

## CS 6000



## CS 6001



## PS 40127



### PS 40127

#### PS 40127/2R

Mold size: 19 1/2" x 7" x 1 3/4"

#### PS 40127/3R

Mold size: 15" x 10 1/2" x 1 3/4" at the edge

#### PS 40127/4R

Mold size: 15" x 13 1/2" x 1 3/4"

## OTHER MOLDS

## FK 8001

Sink Faucet Knockout Set



Rubber plug forms size:

2 x 1 3/8" diameter x 2" tall

2 x 2 3/8" Big End diameter and 1 3/8" small end x 2" tall

## SM 7001

Mold for Multiple Concrete Samples



Mold measurement: 20" x 14 1/2" x 1"

Sections: 12.

Size of each: 5 3/4" x 3" x 1/2"

## VS 101/6

Testing Molds



8" x 4 1/2" x 1 1/2"

## VS 101/6/1

Testing Kit



THIS KIT INCLUDES:

- 1 rubber Veneer Stone Mold (8" x 4 1/2" x 1 1/2" )

- Portland Cement 1.5lb (0.68 kg)

- Play Sand 1.5lb (0.68 kg)

- Concrete additive-Water reducer-Super plasticizer.  
0.246 OZ (7 Gram)

# EDGE MOLDS & STEP LINERS

2" THICK, 96" LONG



CEF 7004



CEF 7005



CEF 7018



CEF 7010



CEF 7006



CEF 7013



CEF 7014



CEF 7015



CEF 7016



CEF 7012



CEF 7017



CEF 7019

SM 1000

8" high x 96" length (20 cm x 245 cm)



*All dimensions are approximate*



**G-1 Concentrated Water-Based Release agent** will aid in releasing concrete or gypsum plaster castings from rubber molds.

- Will Not Stain/Soften Concrete Surfaces
- Mix with Water - Economical
- Will Not Affect Color Pigmentation
- Minimizes "Bug Holes"
- Keeps Molds Clean
- Significantly Extends Mold Life



### Concrete Pigments and Colors

Our Oxide pigment is a dry powder that can be used to add color to concrete, stucco, plaster, mortar, grout, countertop mix and other cement materials. It is also used in the ceramic industry.

### Concrete Additives



### Concrete Fast Setting Additive (CSA)

- cementitious powder that increases the strength, shortens the set times, adds durability and decreases the shrinkage of standard concrete mix designs.

### Concrete Additive-Water Reducer-Super Plasticizer

- optimized for plastification and water reduction of cementitious construction materials

### Concrete Vibrating Tables



### Concrete Vibrating Motors



### Mixers

