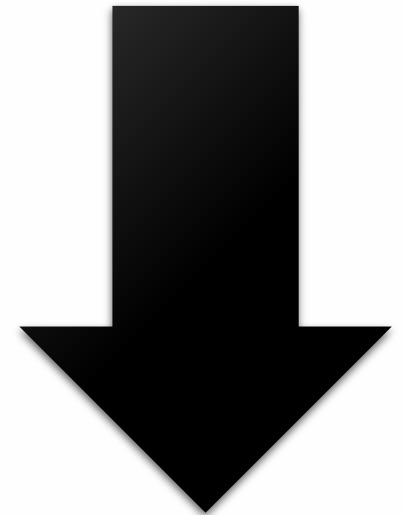
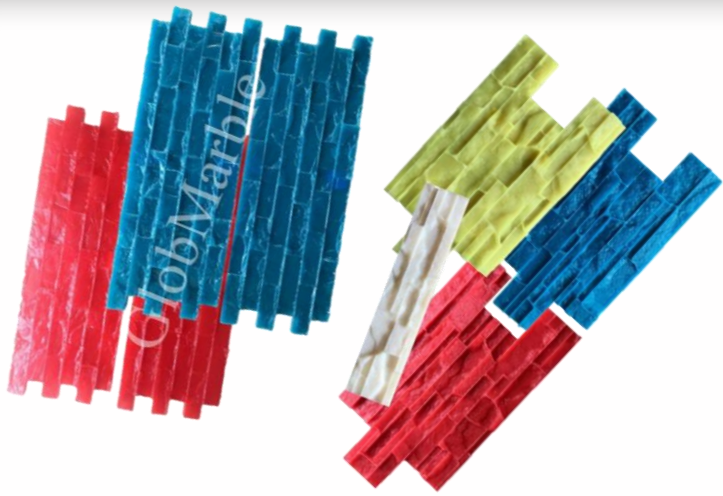


# WALL STAMP



**What You  
Will Need**





# Stamp Molds



# Wall Stamp Mix



# Concrete Stain



# Concrete Cleaner



# Sealer



# Stamp Mold Release



**Sprayer**



**Foam Roller & Roller Frame**



**Trowel**



**Sponge**



**Bucket**



**Mixer**



**Mix your scratch coat for a 0.2 inch coat. The formula for how much concrete you should mix is  $L*W*H*0.05777$**

**Be sure to scrape the sides of your bucket to remove any dry concrete from the edges!**



3

I am using a concrete board, so I have to dampen it. Dry concrete absorbs water from fresh concrete, and vertical overlays will fall off of dry concrete.



4



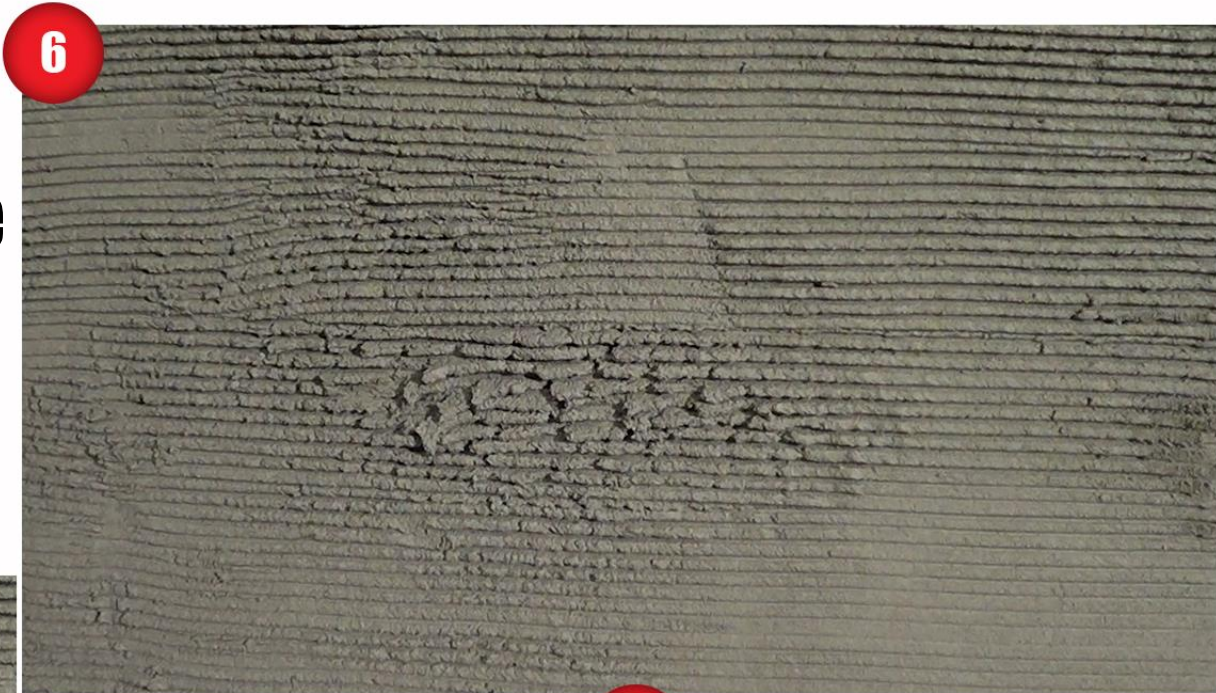
**Apply the concrete  
in a 0.2 inch layer.  
Don't be afraid to  
use a heavy hand!**

5

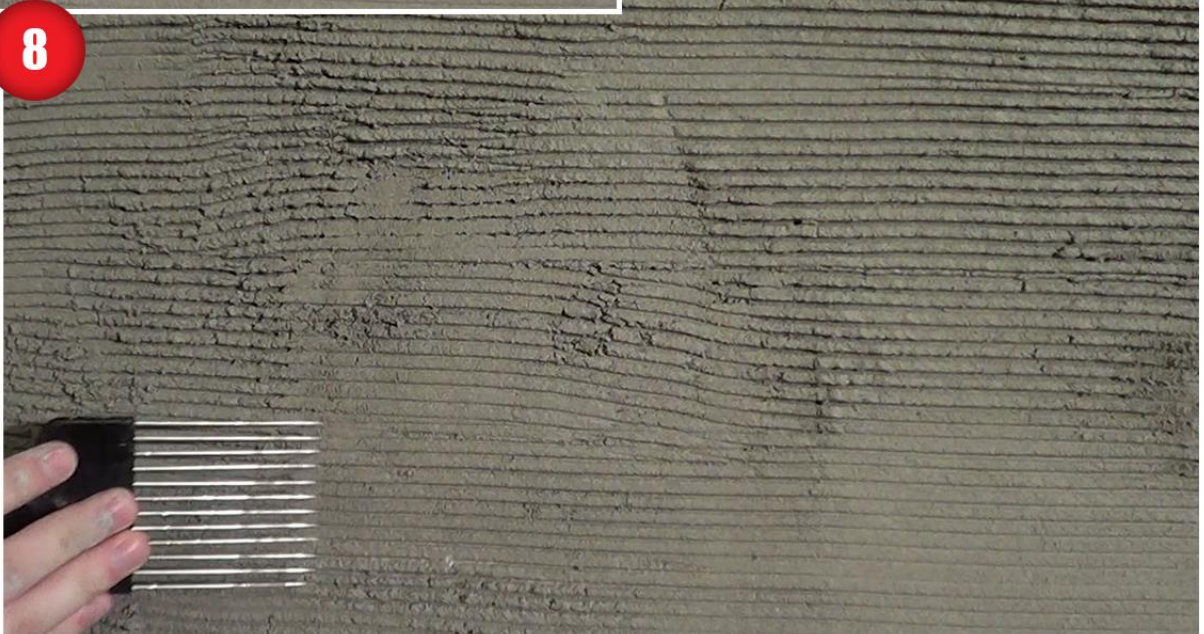
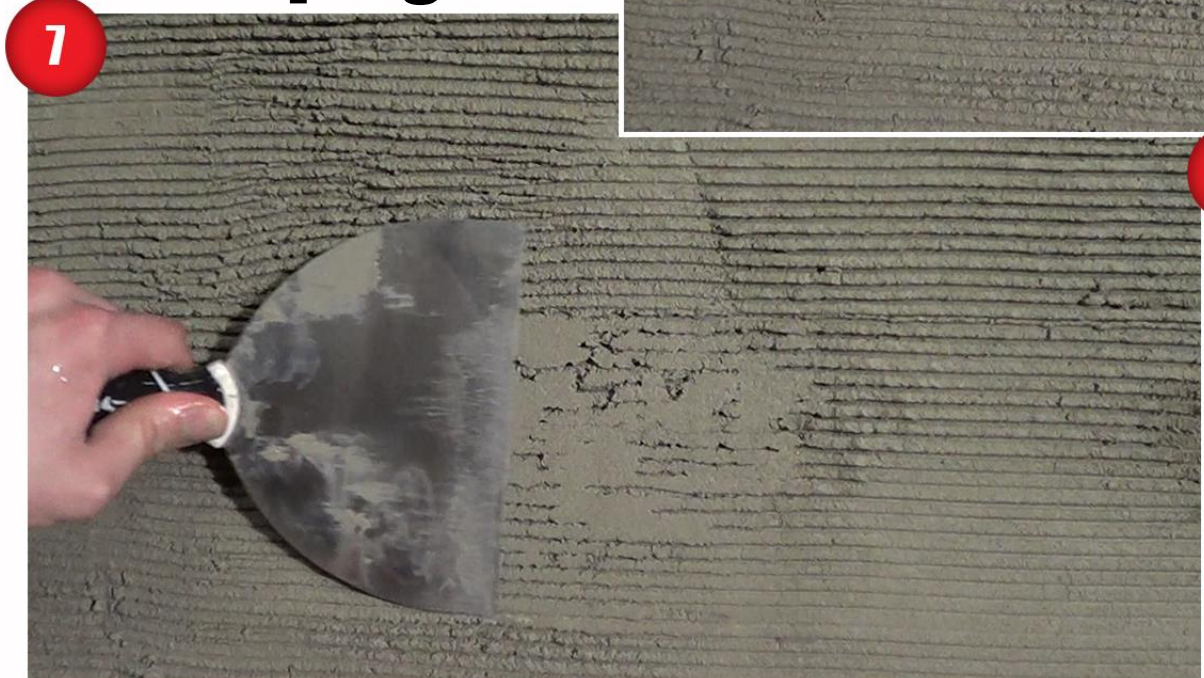


**Scratch horizontal ridges  
into the thin coat. You can  
use anything with ridges,  
I used a hairbrush**

**The scratch coat can have imperfections like bumps. These will affect your stamping.**



**Smooth them out and go over them again**



9



**When the scratch coat cures, mix your face coat**

10



**See if the wall mix falls off of your vertically held hand. If it does not, you have the right consistency**



**When the scratch coat cures, wet it and apply a thin coat with a heavy hand to fill the ridges.**



**Then lay on a thick coat with a light hand, so this coat is soft and fluffy**



14



# Smooth out the face coat

15



**Spray the wall stamp  
release on both the  
wall and your stamps**

# PRO TIP



**To properly hold the stamp, twist one of the handles, and stamp with the other hand**



**Stamp the concrete and try not to stray from the lines**



**Use a flexible mold or a texture pad for difficult to reach areas**



19

# Fix bald spots with a touch up wheel

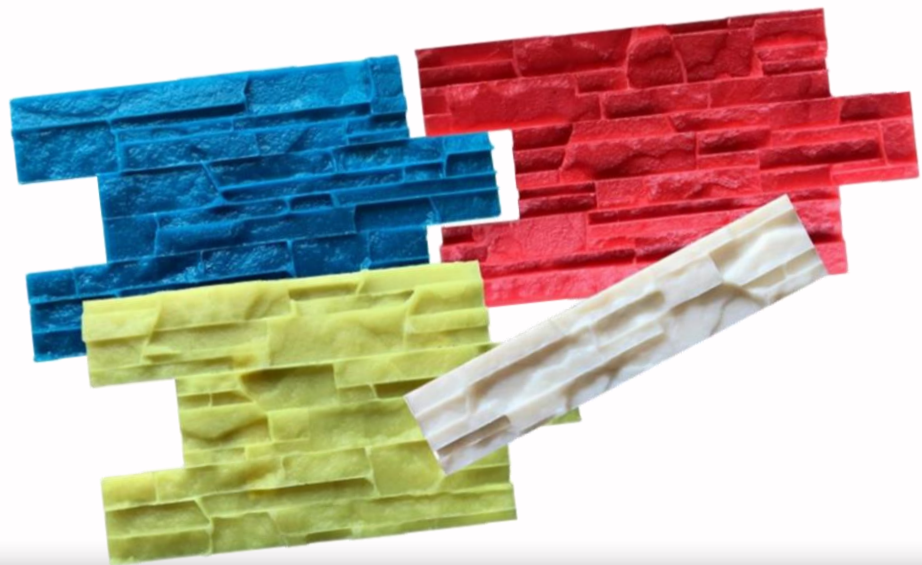


20



I used the 10601 set  
for the second half  
of the wall

21



# PRO TIP



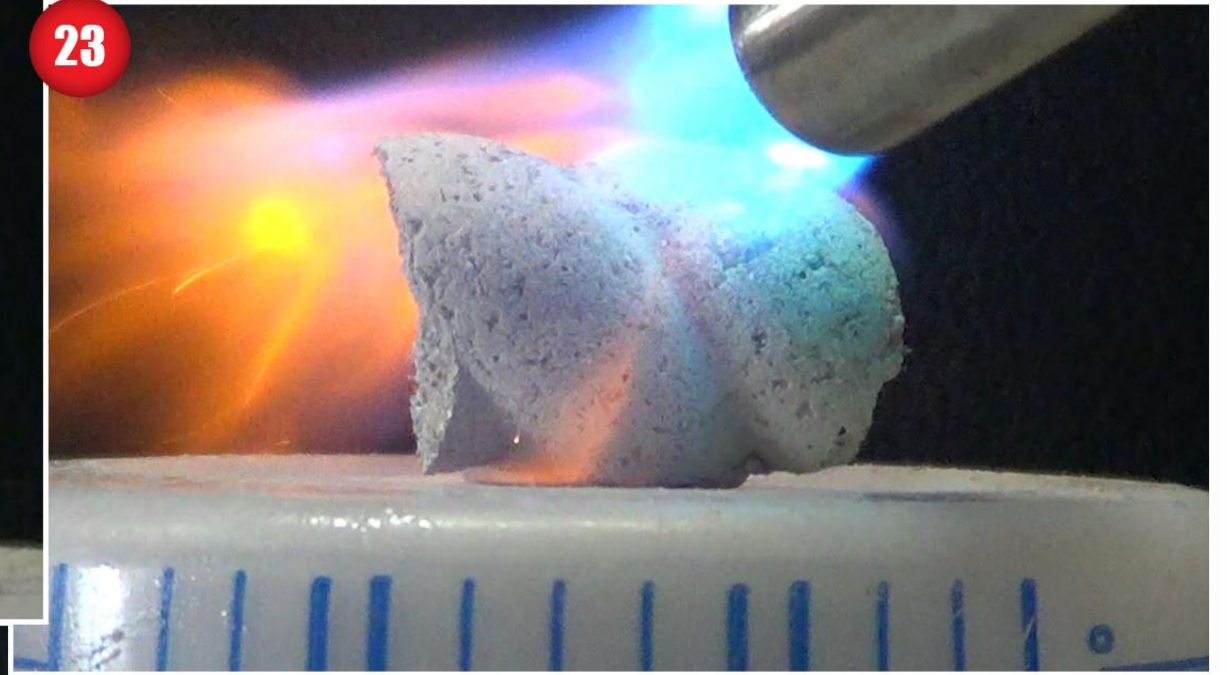
**Texture  
pads are  
used to fill  
bald spots**



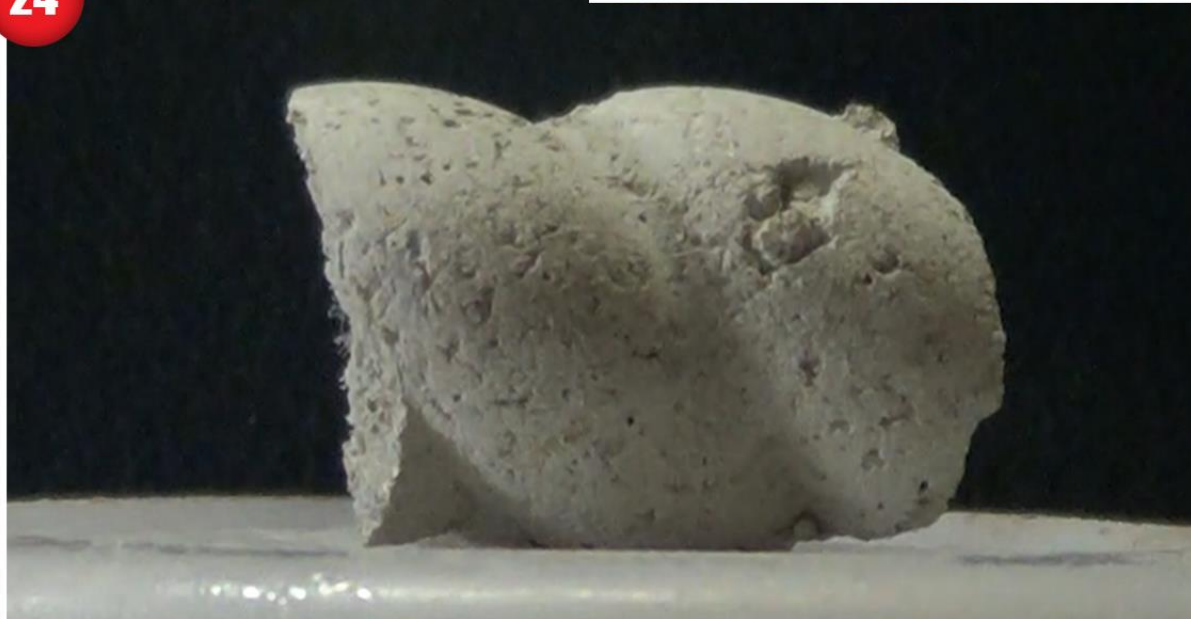
22



23



24



**PRO  
TIP**

**Quickly torch  
your dried  
concrete to  
remove fibers**



SCR is a concrete  
degreaser that  
cleans and  
exfoliates the  
concretes pores.  
Spray it on your  
wall

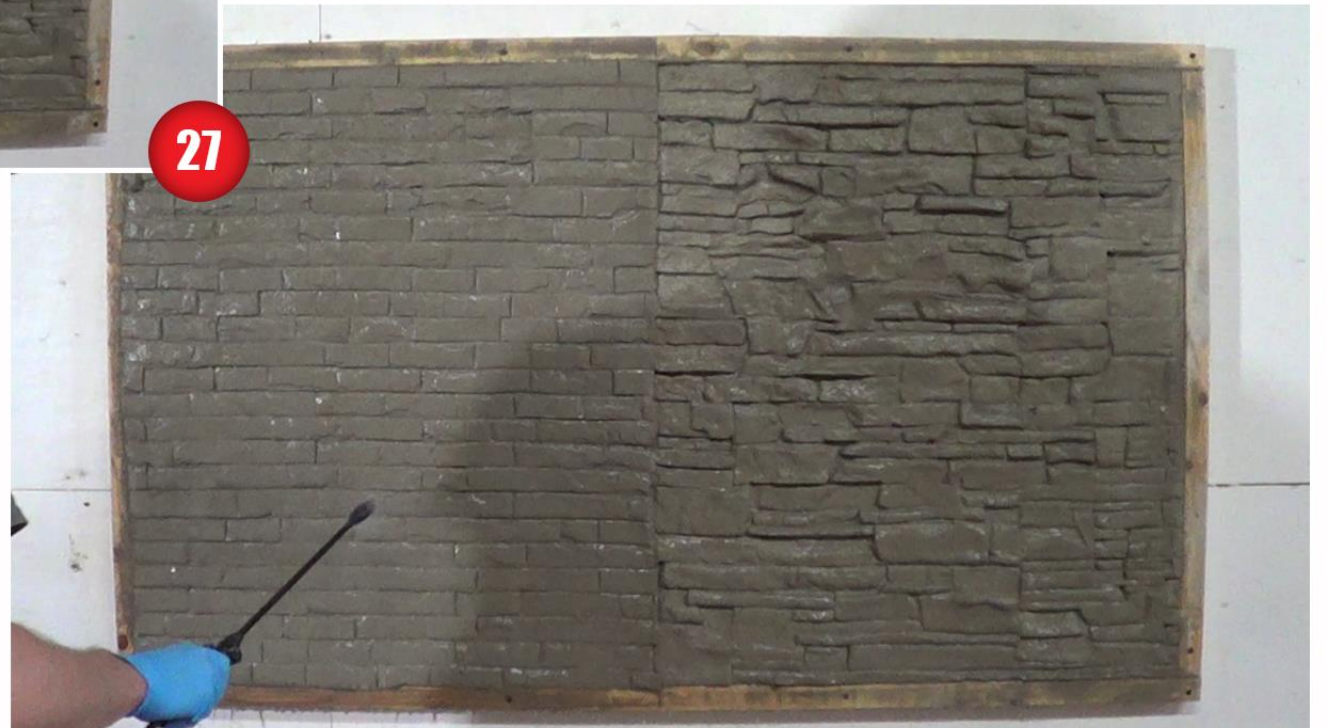


26



**Scrub the SCR in  
with a sponge**

27



**Clean off the  
SCR with water  
before it dries**

28



**Once it dries, spray  
your wall with the  
lightest color stain  
you chose**

29



**Spray it in a  
circular motion**

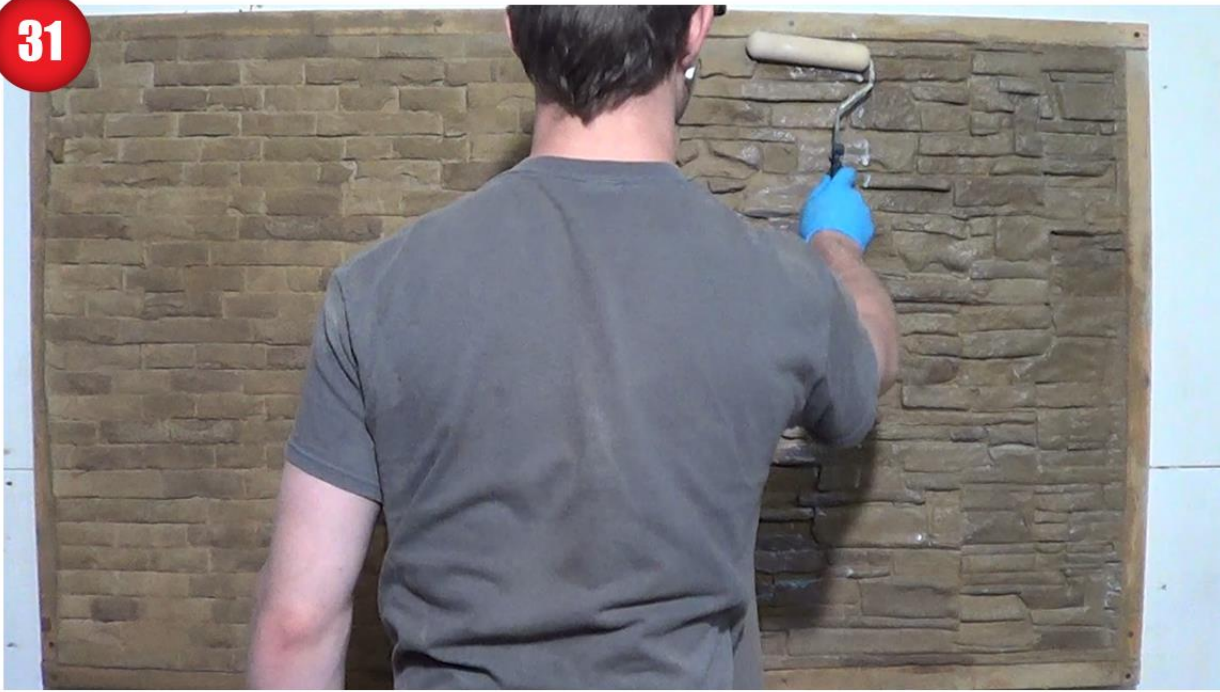
30



**Stain the  
stones  
different  
colors with a  
sponge**

**Be sure not to  
soak the  
sponge too  
much or else it  
will drip on  
your wall**

31



**Once the stain  
dries, apply  
your sealer with  
a sponge roller**



**You can  
reach  
difficult  
areas with a  
brush**



**Once the  
coat cures,  
apply a  
second one**



# **Watch the Full Video Here**

**EASY! FAST! EFFECTIVE!**

