

WOOD FLOOR STAMP

HOW-TO



WHAT YOU WILL NEED



Joint Tape



**Feather
Finish**



**Painters
Tape**



or



Floor Grinder

Self Leveling Concrete

Industrial Bucket



Concrete Cleaner

SureStamp

SureBond



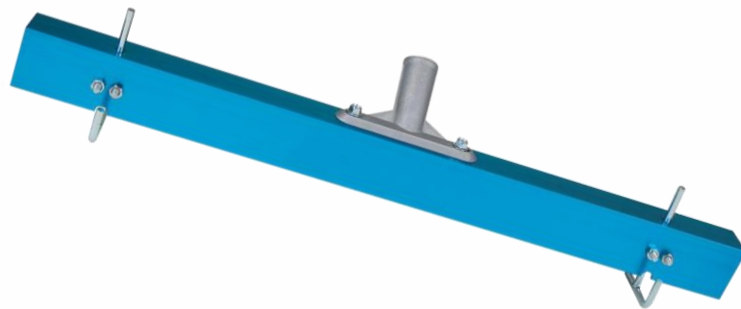
Power Mixer



Trowel



Squeegee



Gauge Rake



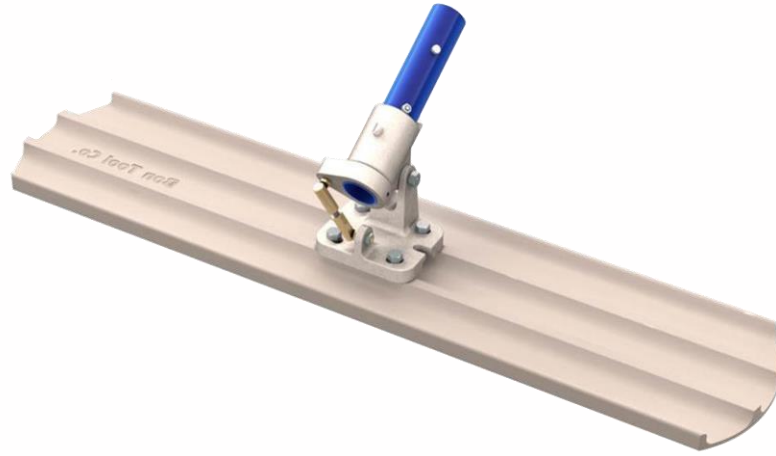
Pump Sprayer



Stamp Mold
5000



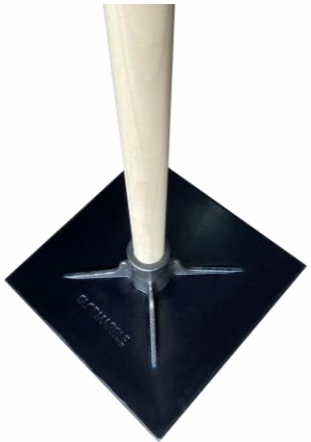
Color Pack



Bull Float



Stamp Release Agent



Tamper



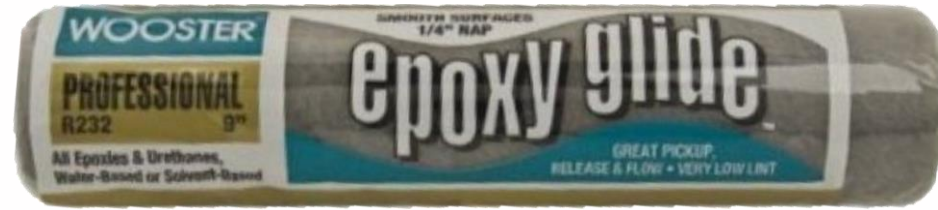
Touch-Up Wheel



Mixing Container



Chisel



EpoxyGlide Roller



**Water Based
Stain**



Sealer

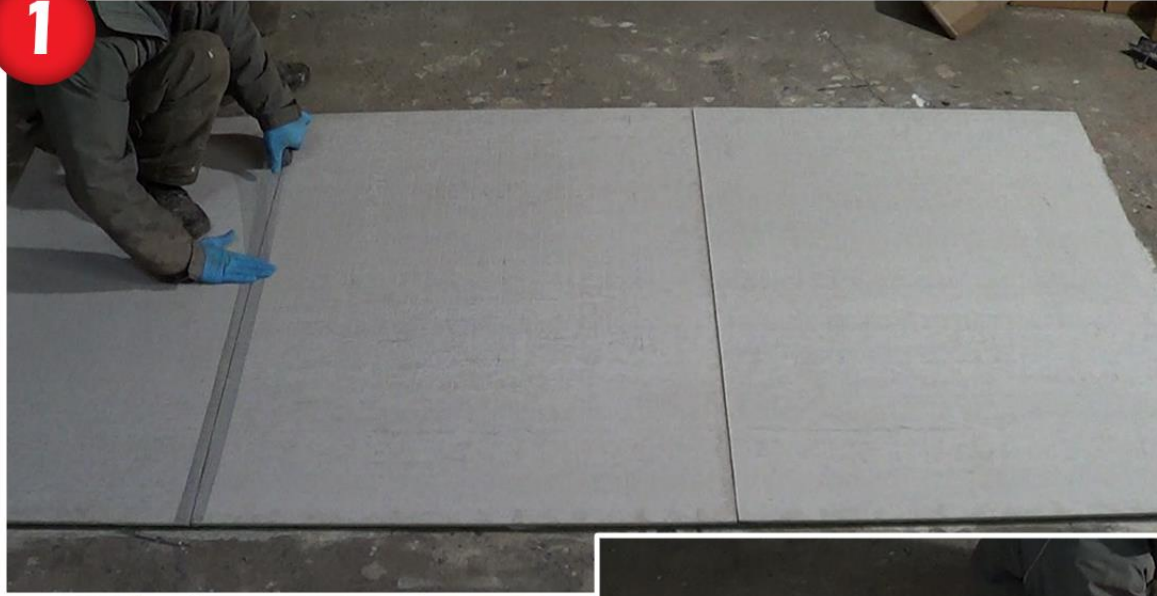


If working with an existing floor, use either self leveling concrete or a floor grinder to completely flatten it



If working with hardy boards, tape the seams with joint tape

1



Apply FeatherFinish to the joints and any screw holes



2



3



Moisten the board after your feather finish dries

4



Pour SureBond onto the floor. SureBond acts like a glue between the floor and your stamping coat



**Squeegee the
SureBond across
your entire floor**

5



CAUTION

**Work quickly and
don't let the
SureBond dry!**

**Mix a
color pack
into your
water**



**I used the
color
"Almond"**



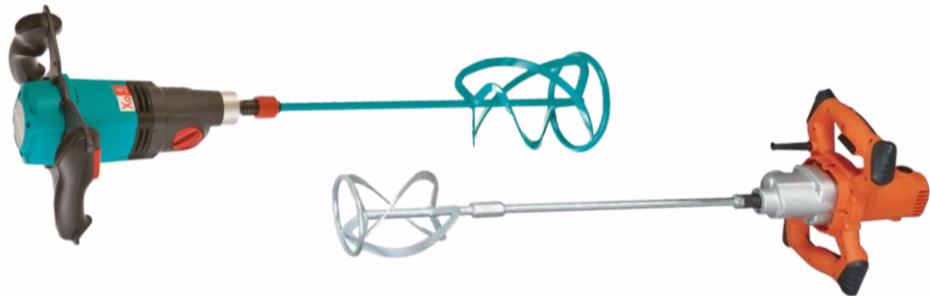
6





**Pour your
SureStamp into
the water**

**Mix the concrete
with a power mixer**



7



Tip for Newbies

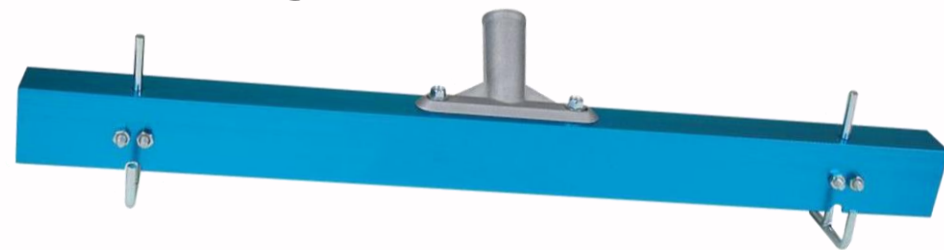
8

**Scrape the sides of
your bucket to
avoid unmixed
material**





Use a gauge rake to spread the SureStamp on your floor



PRO TIP

The stamp coat thickness should be a little thicker than the grout lines in your mold

9



**Trowel the
surface
completely flat
so the rough
texture is not
left on your
stamp**

10



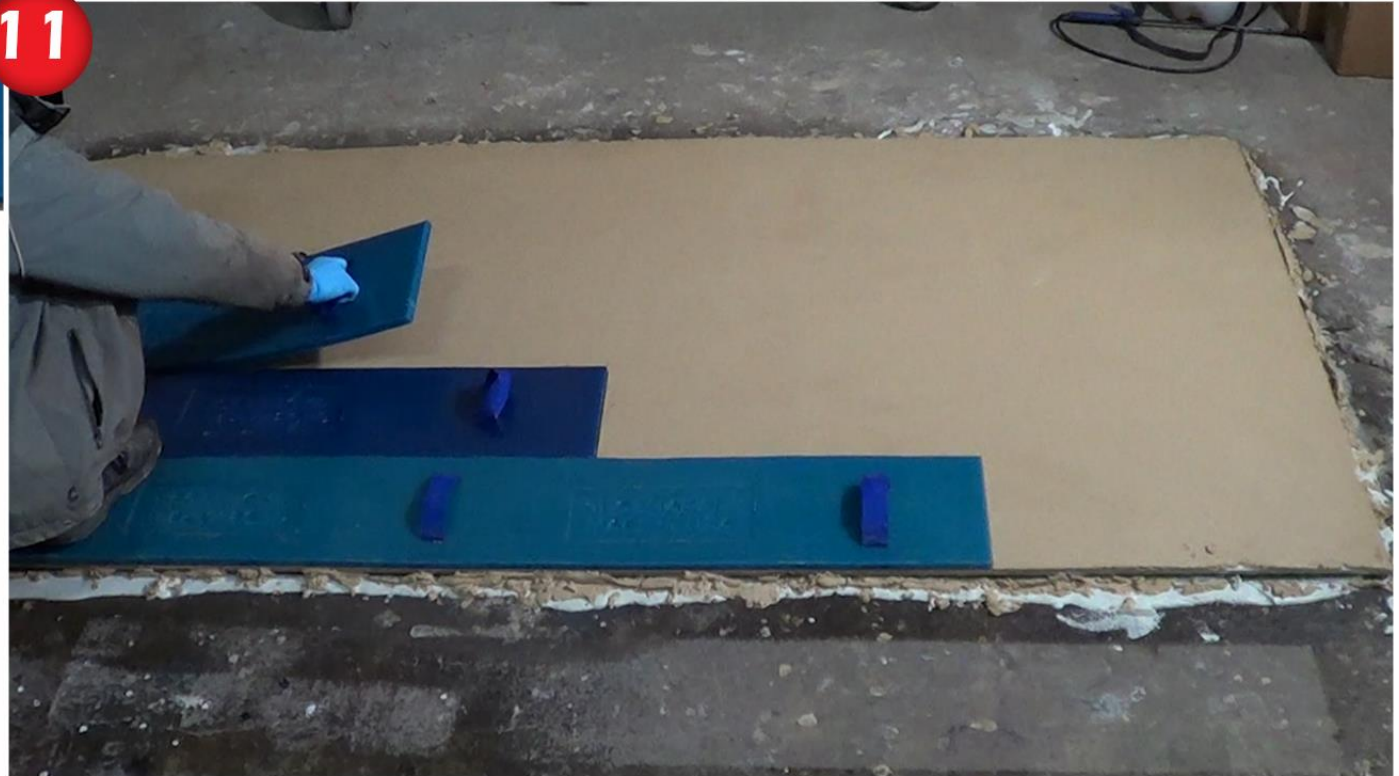
**You can start
stamping when
nothing is left
on your finger
after you touch
the concrete**



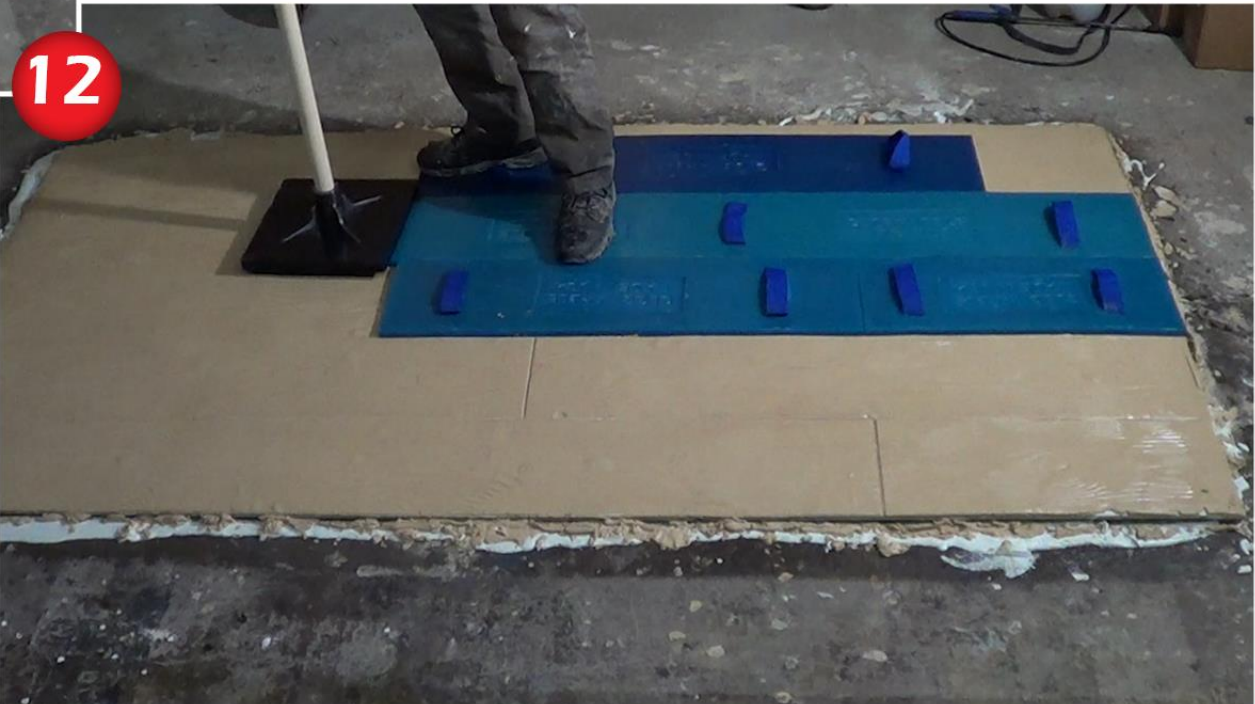
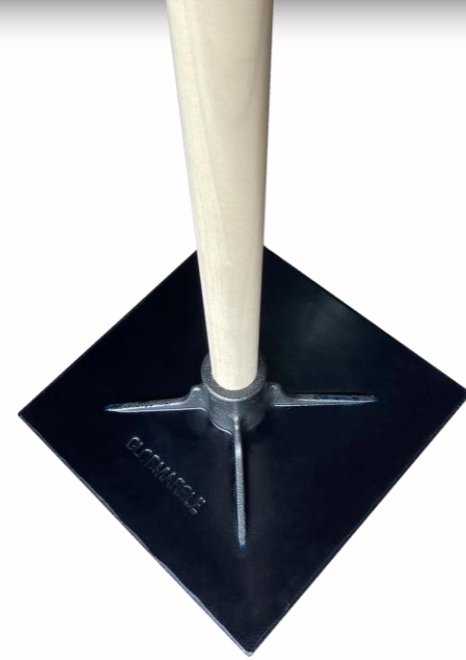


**Spray release on both
the stamps and your
concrete. Respray the
stamps occasionally.**

11



**Start
stamping
the floor**



**Use a tamper to
get a better
stamp imprint**

**Imperfections
might appear
in the seams
in between
molds**



**Fix them
with a
touch up
wheel**



13





Once it dries, wash it with a concrete cleaner to remove the release agent

14

CAUTION

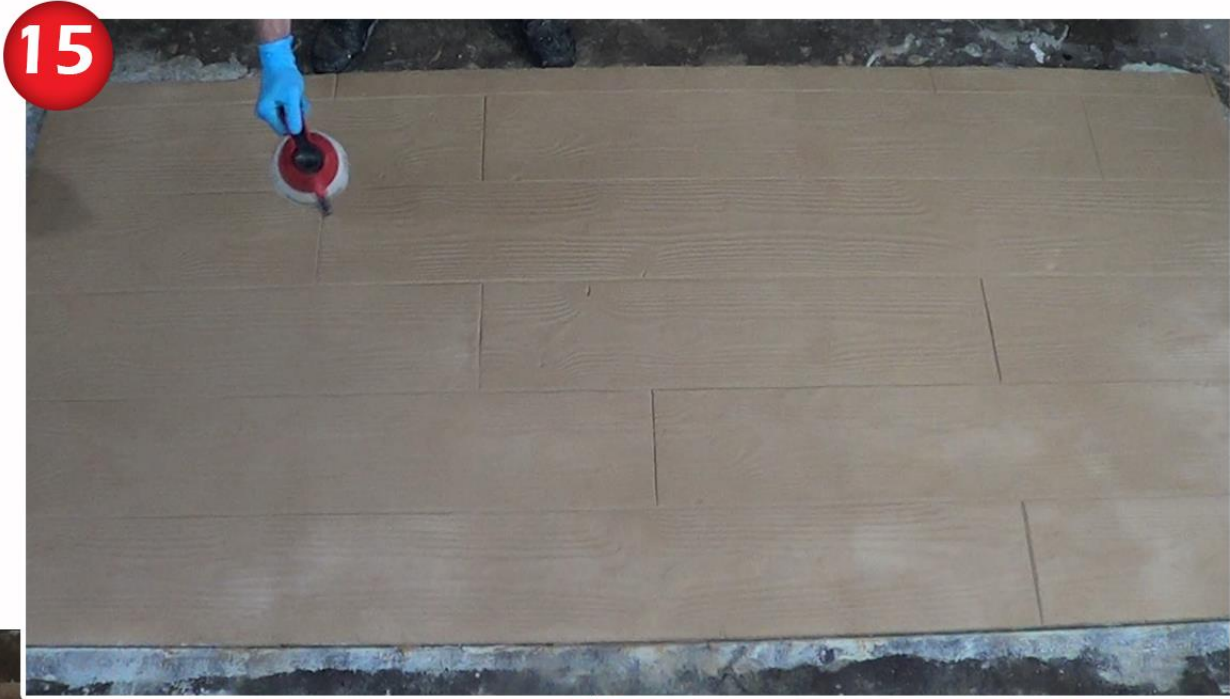
Do not let the SCR dry. Wash it off with water while it is still wet!



STAINING METHOD NUMBER ONE



**Dampen
the board
with water**



**Spray the
stain in a
circular
motion**



**If you are
unsatisfied with
the stain, it is very
easy to fix.**



17

**Use water to
move the stain
around**



This only works with water based stain

**STAINING
METHOD
NUMBER
TWO**



Staining Technique #2



I washed off the stain with SCR to work on a "blank canvas"

Dip a sponge into stain and lightly brush the top of your floor with it.



18

PRO TIP

Do not oversoak the sponge to prevent dripping, and keep the sponge completely flat on the floor. NOT AT AN ANGLE!!!



Apply your sealer once the stain dries



19



I used the Polyaspartic Sealer GP-20



Watch the full video here

Hyper-realistic

