

HOLD THE VISION.  
TRUST THE PROCESS.

WOMEN

NO  
WATCH



# What You Will Need



Squeegee

Solid  
Epoxy  
Pigment



Floor  
Epoxy

# Spike Shoes



# Metallic Pigment



# 18" Roller





# GU-30 Sealer

# 6" Roller



# Paint Mixer



**Feather  
Finish**

**Floor  
Grinder**



**Putty  
Knife**

# Buffer And Sanding Screen



# Vacuum Cleaner





**The floor must be grinded to remove the top layer of concrete so that the epoxy can properly adhere to the floor**

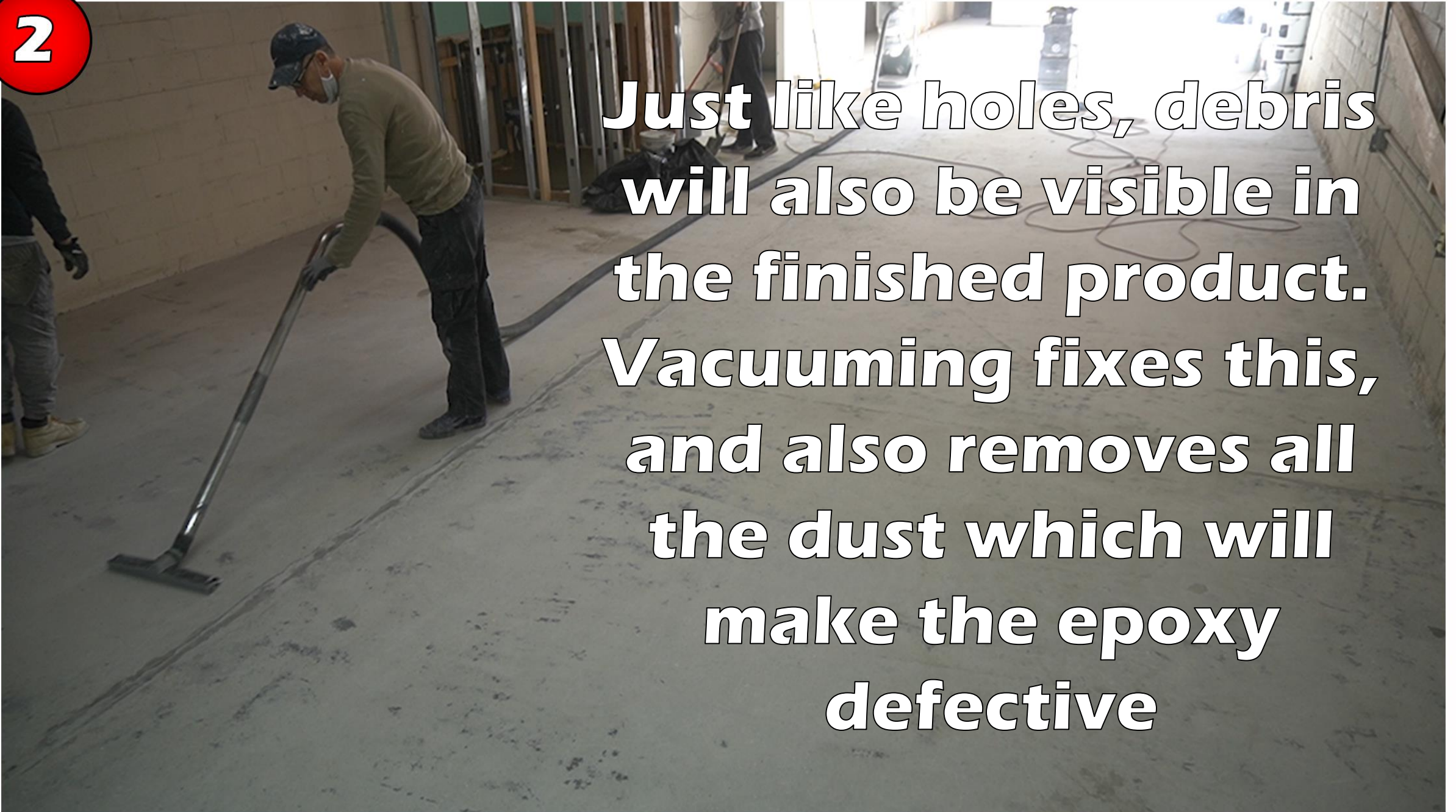
**1**

**Any cracks, holes or low points are then patched. If not, they will be visible through the epoxy coat**



2

**Just like holes, debris will also be visible in the finished product. Vacuuming fixes this, and also removes all the dust which will make the epoxy defective**





# Primer Coat



**Our GE-100 Epoxy along with its solid pigment can be used as a primer coat and has a coverage of approximately 100 square feet per gallon. Primer coats are important for masking the color of the concrete floor, and the color of the primer should match the color of your metallics. White for light colors, black with dark.**

**Our pigment is added to the Part A at a 1 quart per 1.5 gallon kit ratio**



**Then you mix in the Part B at a 2A:1B Ratio**



**3**





4

**The primer is spilled and rolled out on your vacuumed floor**



**Use spike shoes to be able to walk on the epoxy!!**





**5**

**The next day, sand the primer to make sure the metallic and primer coats stick together**

**Be sure to vacuum all the dust afterwards!**



# Metallic Coat



The metallic coat is the coating which will give you color on your floor. You can use the same GE-100 epoxy at a coverage of 60-100 square feet per gallon.

**Mix the metallic pigments into your Part A at a 1 pint pigment : 3 gallon kit of GE-100 ratio**



**6**

**The colors we used were “slate” and “gunmetal”**





**Add your Part B at  
a 2A:1B ratio and  
mix for 3 minutes**

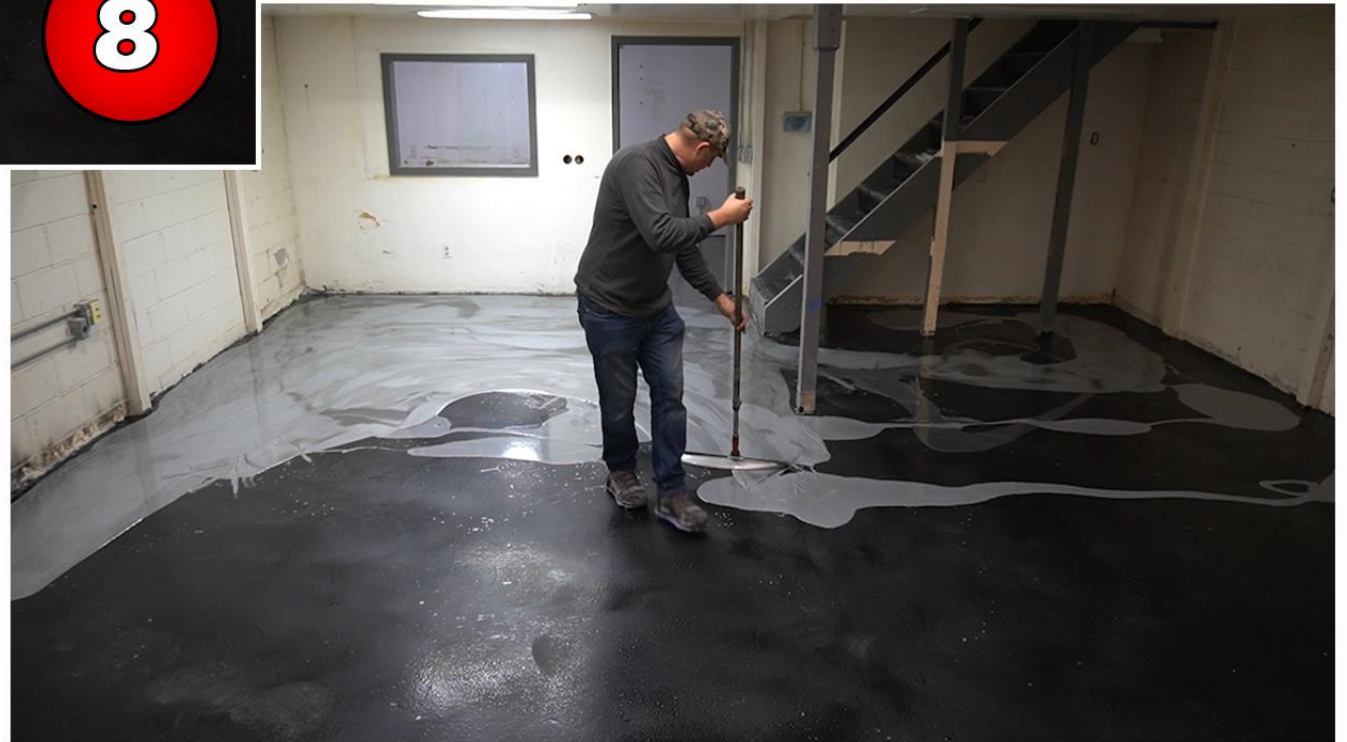
**Do not leave the epoxy  
in your bucket for a  
prolonged period of  
time to avoid epoxy  
malfunction**





**Pour out your  
two colors in a  
random pattern**

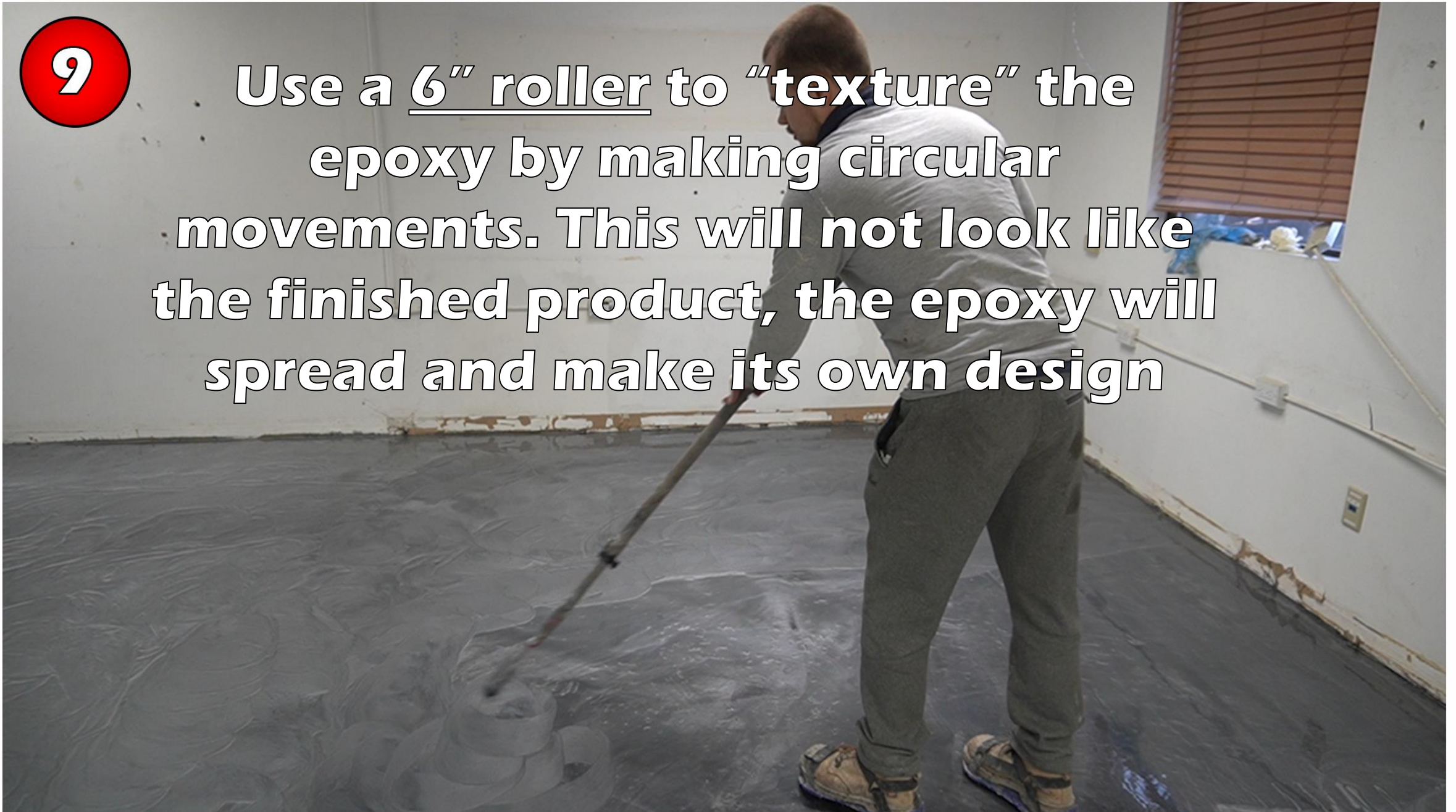
**Then spread the  
epoxy out with a  
squeegee**





**9**

**Use a 6" roller to "texture" the epoxy by making circular movements. This will not look like the finished product, the epoxy will spread and make its own design**





**The next day,  
come back and  
sand the floor**

**Don't forget  
to vacuum!!**



**The sealer or “topcoat” is used to protect the epoxy from scratching and general wear and tear. We used GU-30 which has a slip resistant additive. Its coverage is 500-600 square feet per gallon**

# Top-coat



**First, premix  
the  
components**



**Then mix  
the Part A B  
C together  
for 3  
minutes**

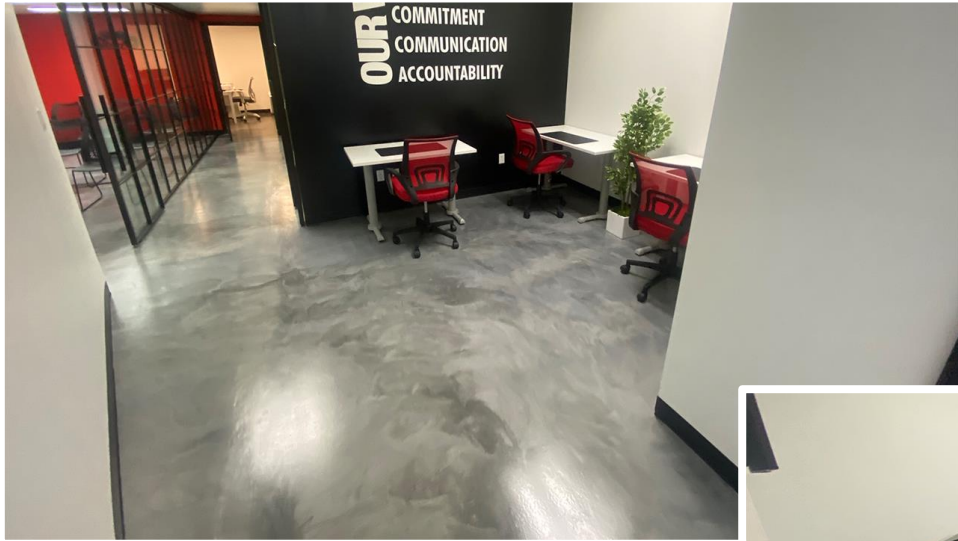




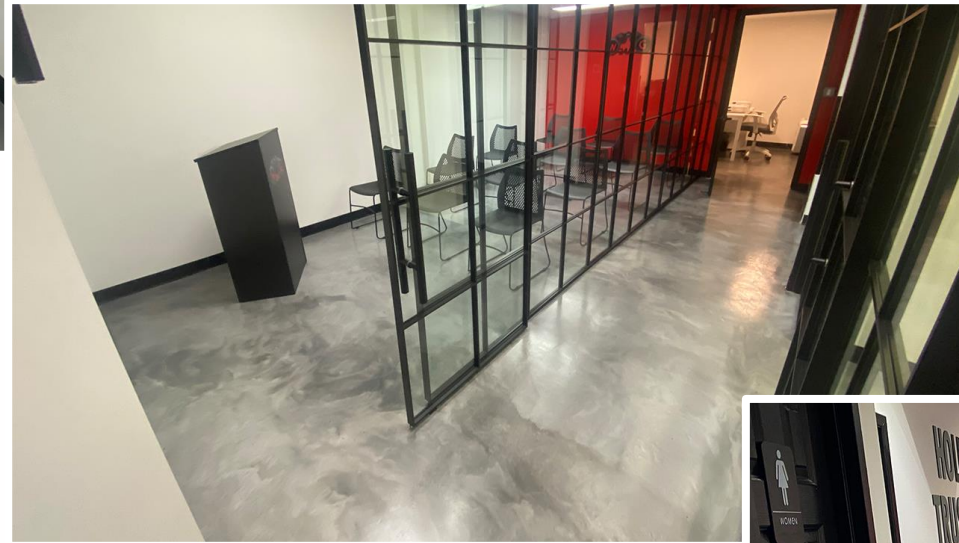
**Spill a thin line  
of GU-30 and  
roll it out thin**

**A little bit goes a  
long way and too  
much GU-30 will  
cause yellowing**





**And You're Done!**



**Enjoy!!!**



**To watch the full video click [here](#)**

