



**New
&
Easy
Method**

What You'll Need



Countertop
Edge Form

Optional



SCR



Double
Side
Tape



**Denatured
Alcohol**



Caulk



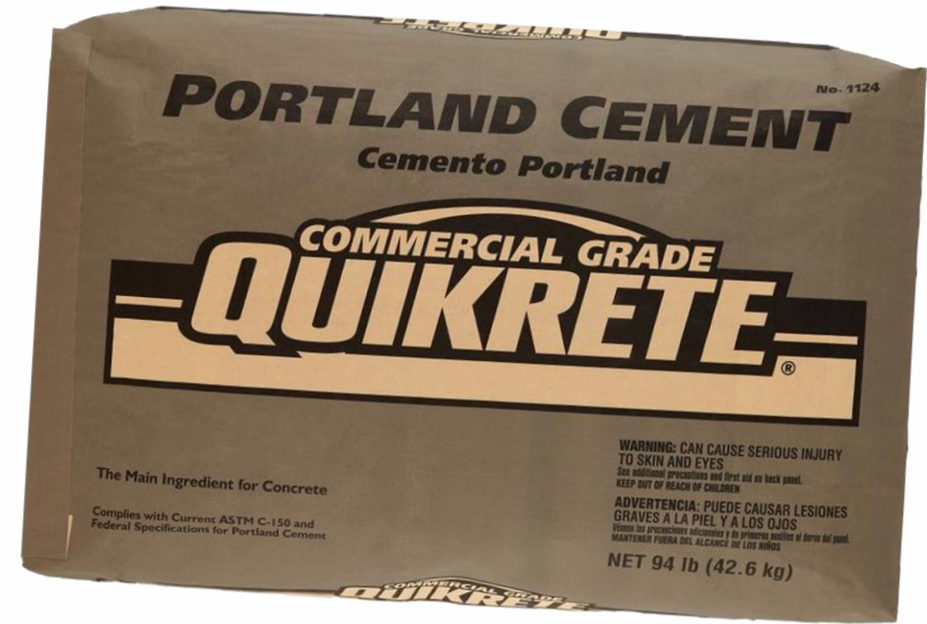
**Mold
Release**



Non- Aerosol Sprayer



Sand



Cement



Concrete
Hand
Mixer



Heavy
Duty
Bucket



Plastic
Container



Trowel



Stamp
Release



Small Skin
Stamp



Optional



Optional

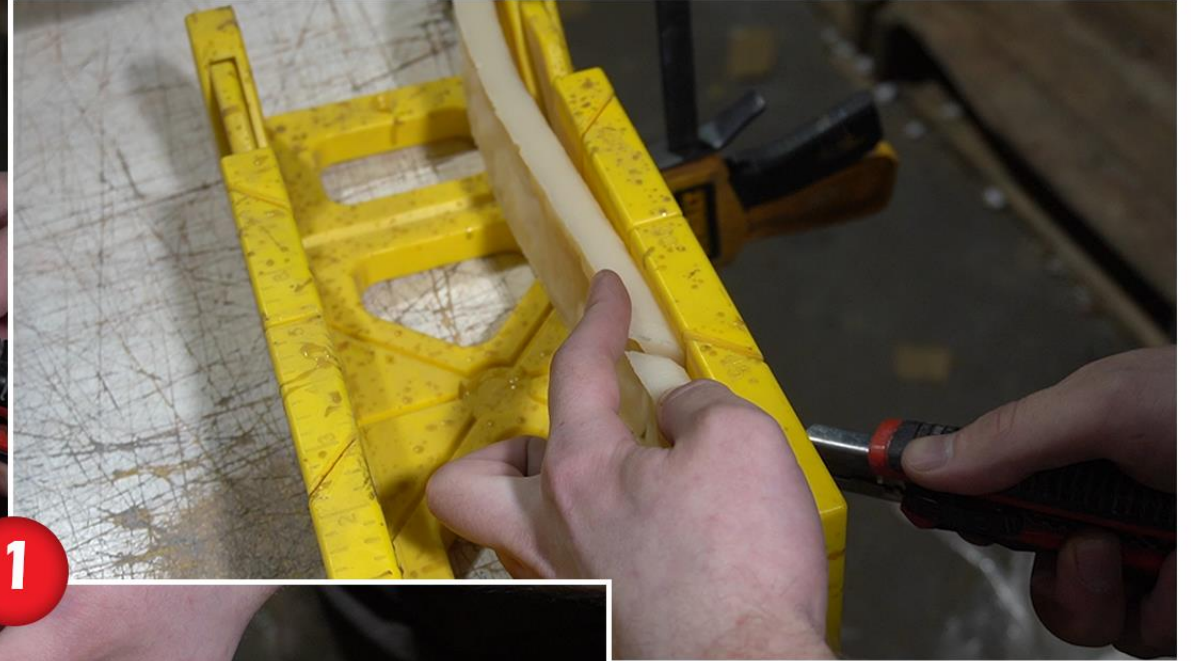
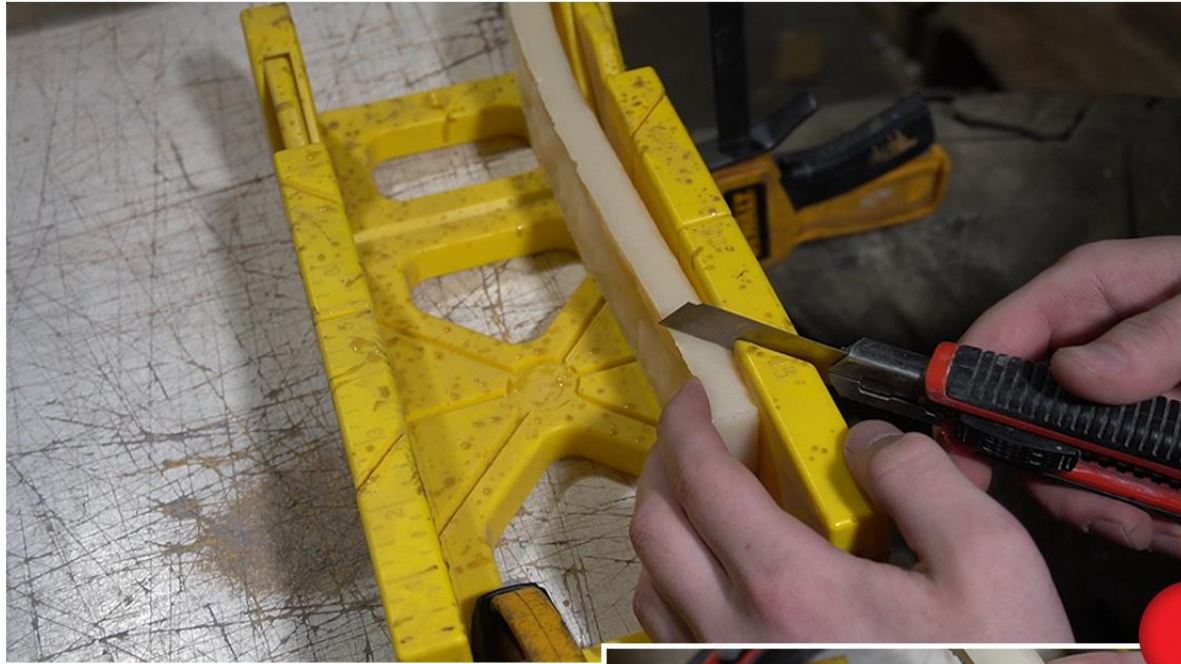


Optional

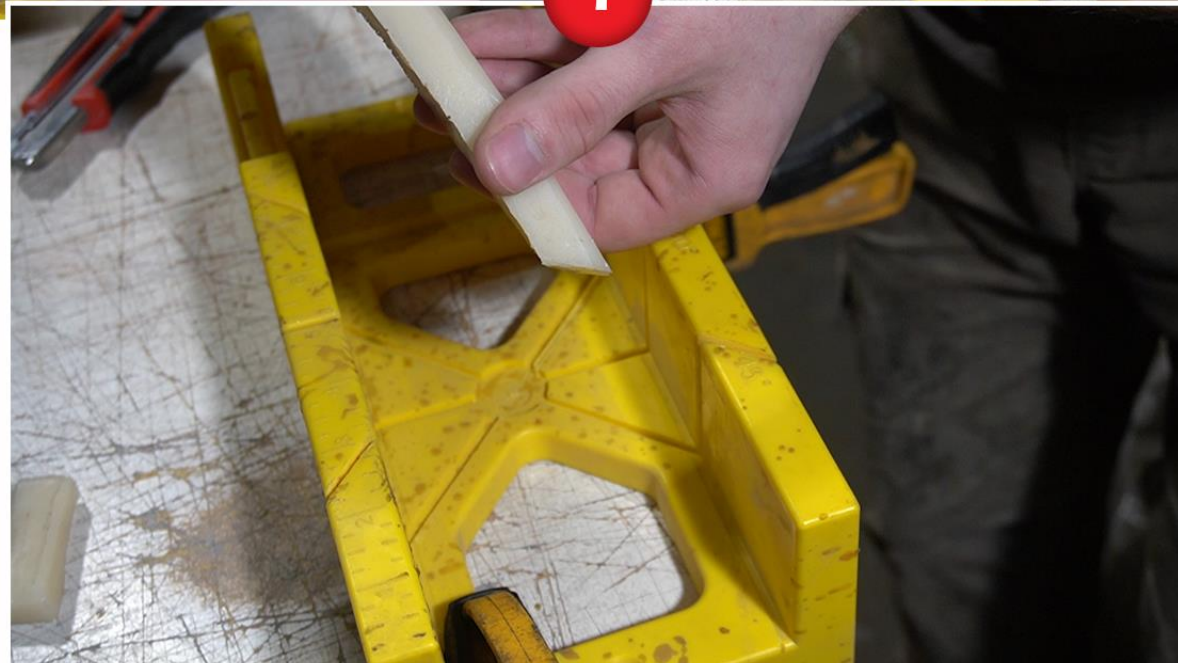
**Pump
Sprayer**

**Eco-
Stain**

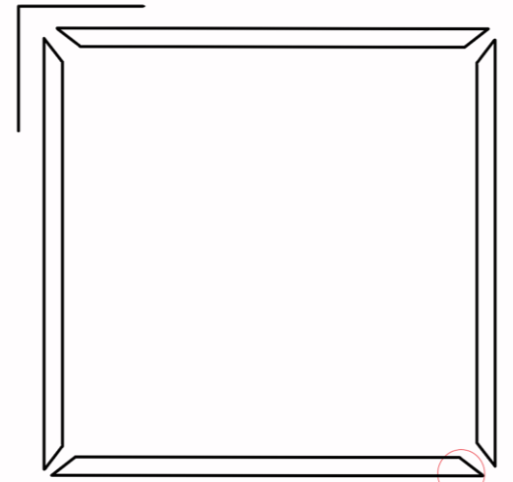
Sealer



1



90°



45°

First thing you do is cut 45 degree angles into your edge-molds to fit them into a form box

Cut a form box out of melamine



Clean it with
denatured
alcohol so you
get a good
bond with the
double side
tape

2





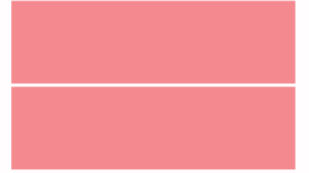
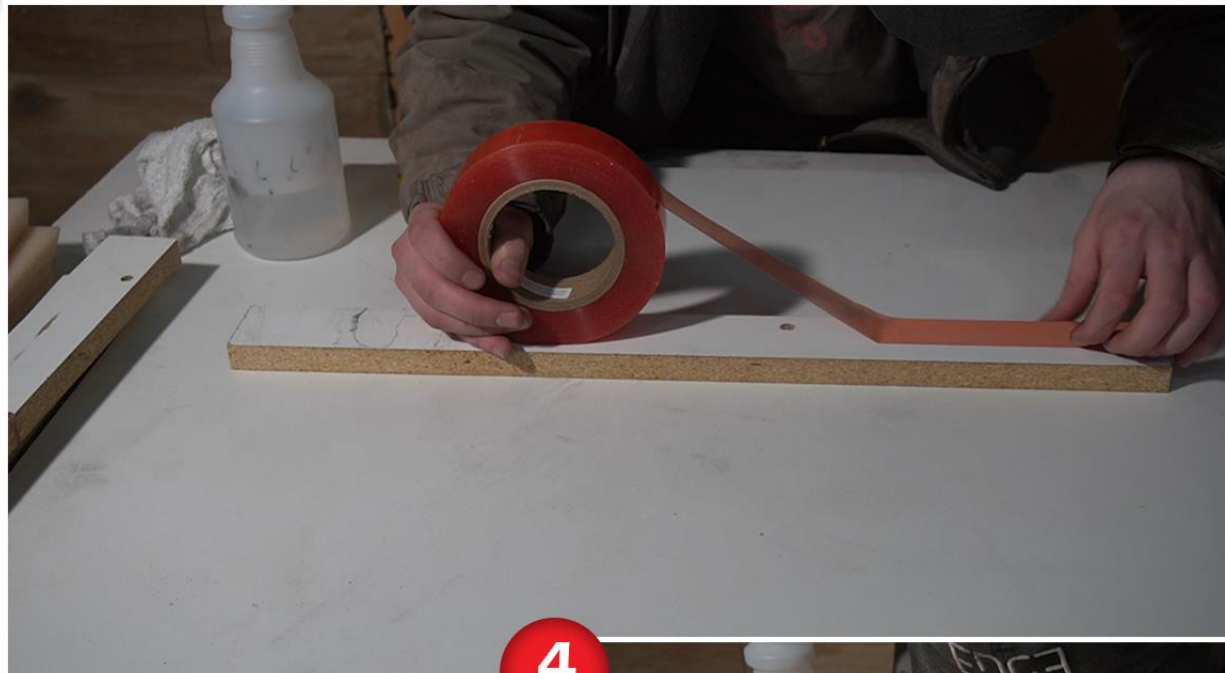
**Be sure to use
denatured alcohol
on the back of the
mold also!!**

Caution

**Never clean the rock textured
face of the mold with alcohol,
because it will corrode the
rubber and make the rock
texture look fake and plastic**



**Put double
side tape on
the form walls,
but be sure not
to overlap the
tape**



4

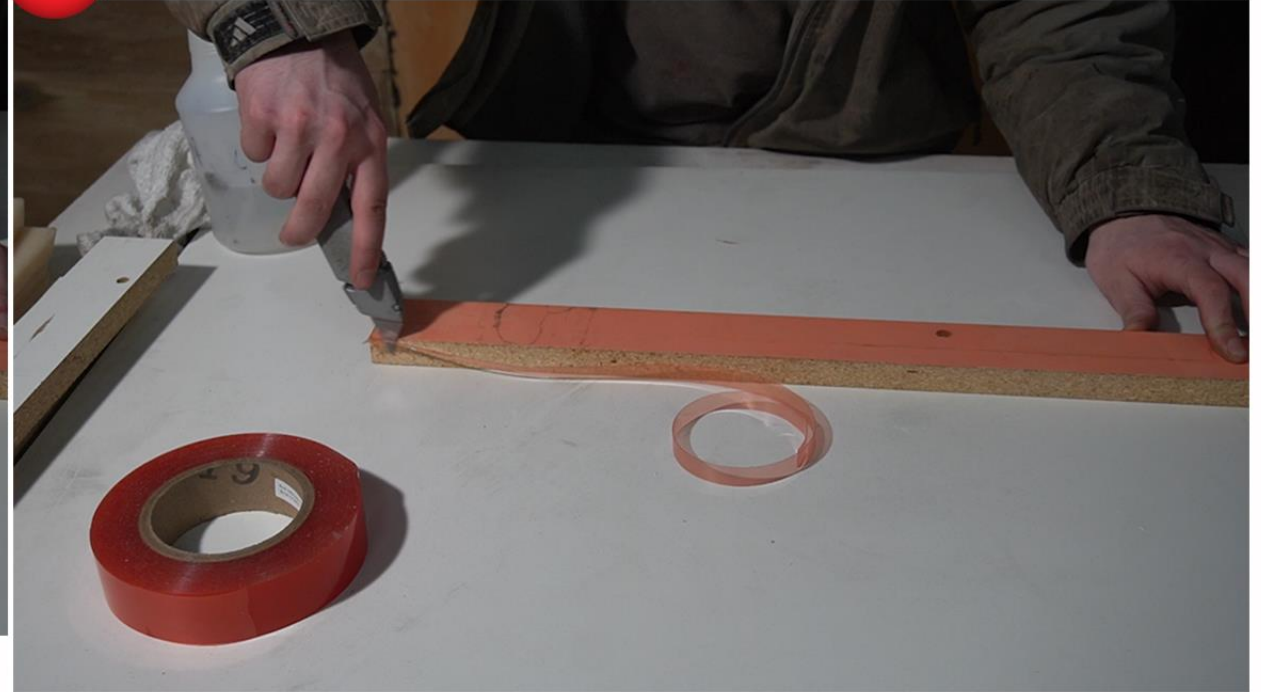
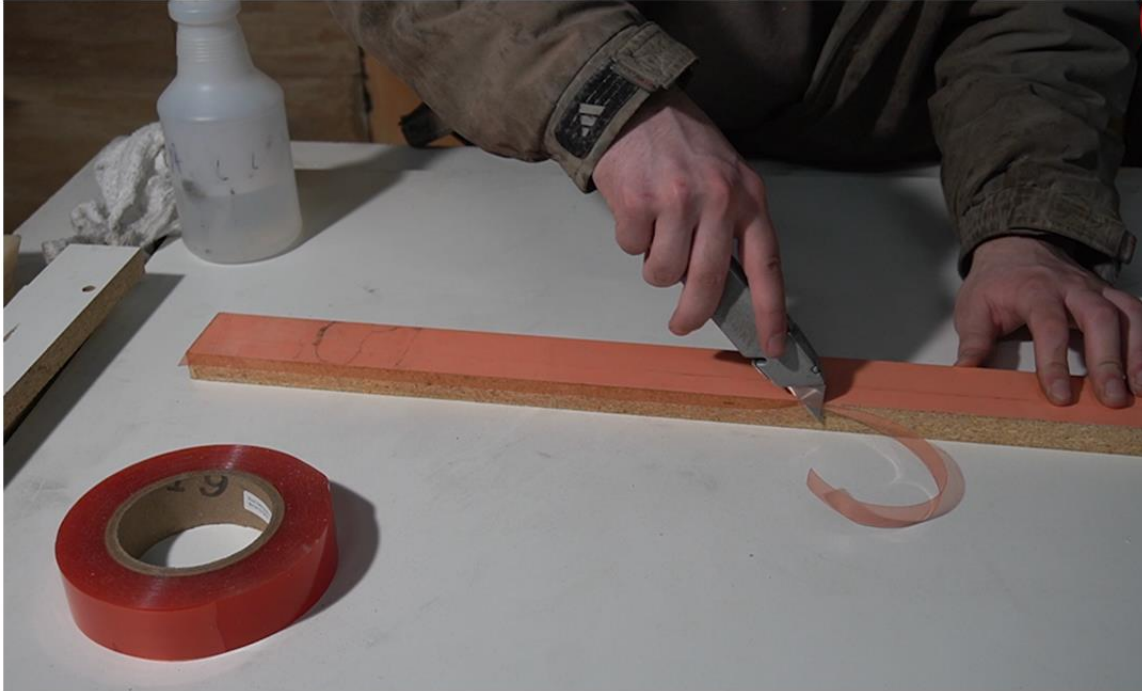


**Cut the
excess tape
off of the
form walls**



**Make sure
its
completely
flush with
the walls**

5



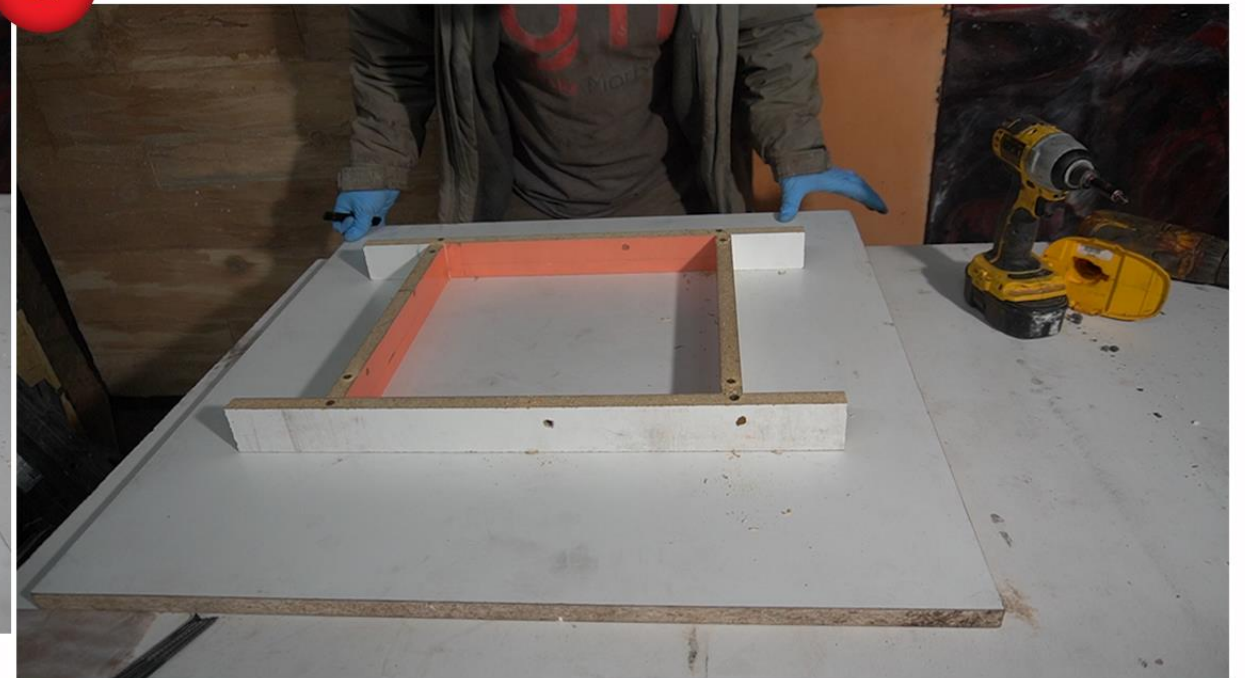
**Now its
time to
construct
your box**



**Make sure
your angles
are 90° so
that the 45°
edge molds
fit perfectly**



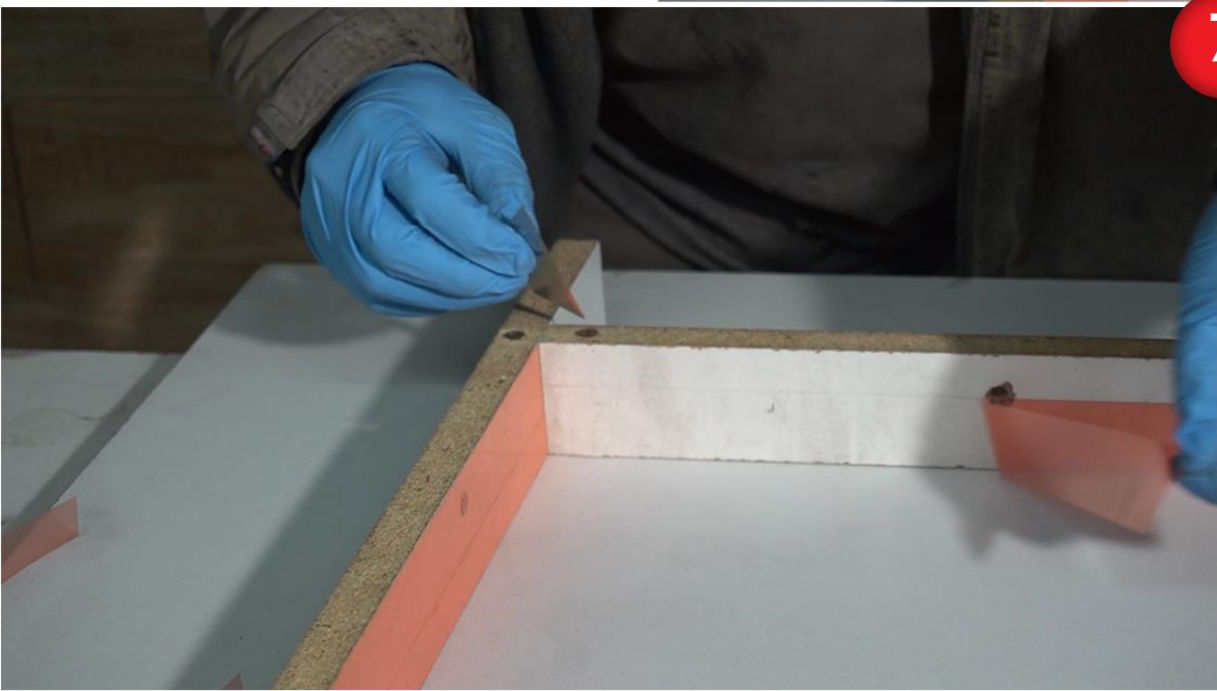
6



Remove the pink protective covering from the double side tape



At this point the tape is exposed, so make sure the tape is not contaminated with any debris



7



**Stick your
edge molds
onto the
tape**



**During the first few
minutes the mold is
easily removed
from the tape, so
take this time to
adjust the mold and
make sure it is flush
with the floor of
your form**



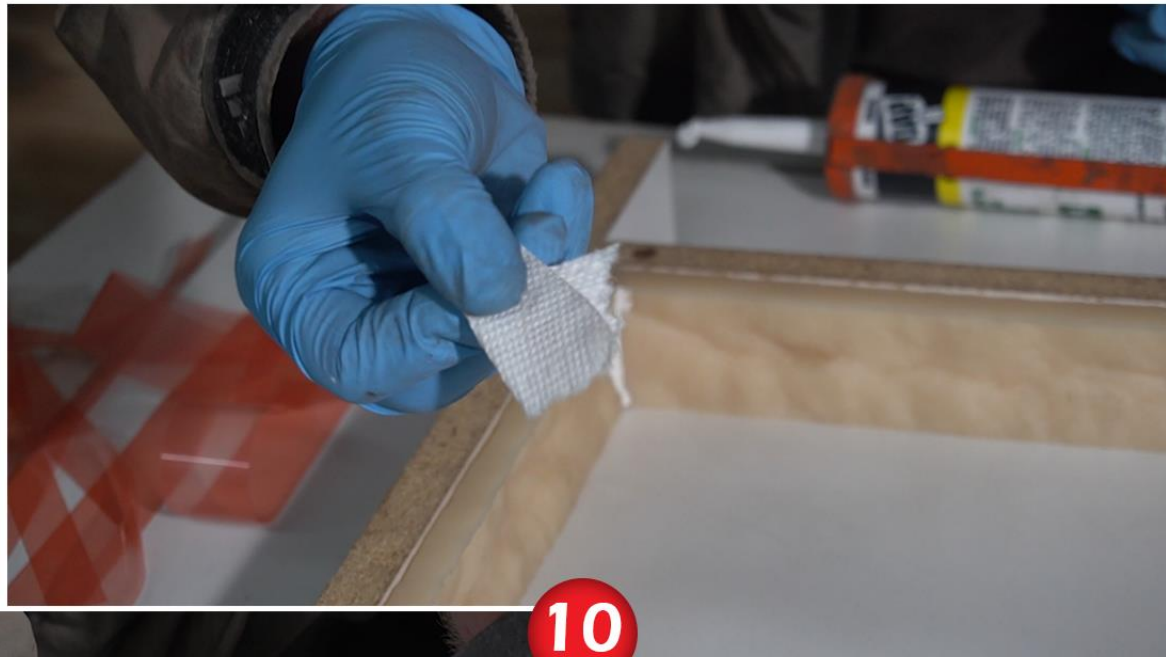
Sometimes the corner does not create a perfect seam, so fill it with caulk



PRO TIP
Use **BONDO** instead of caulk to make the process much quicker. Only do this if you can work quickly, **BONDO** has a fast cure time



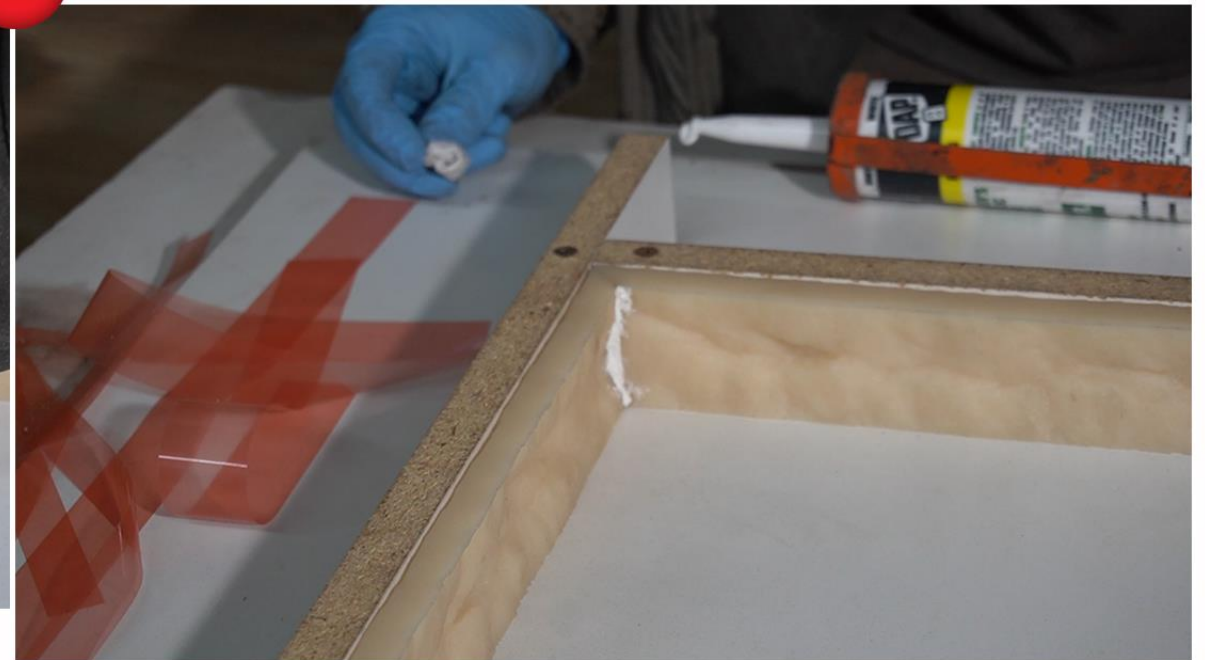
Use a paper towel to create a stone texture in the caulk



Caulk has a slow cure time so take your time to make the seam look natural



10

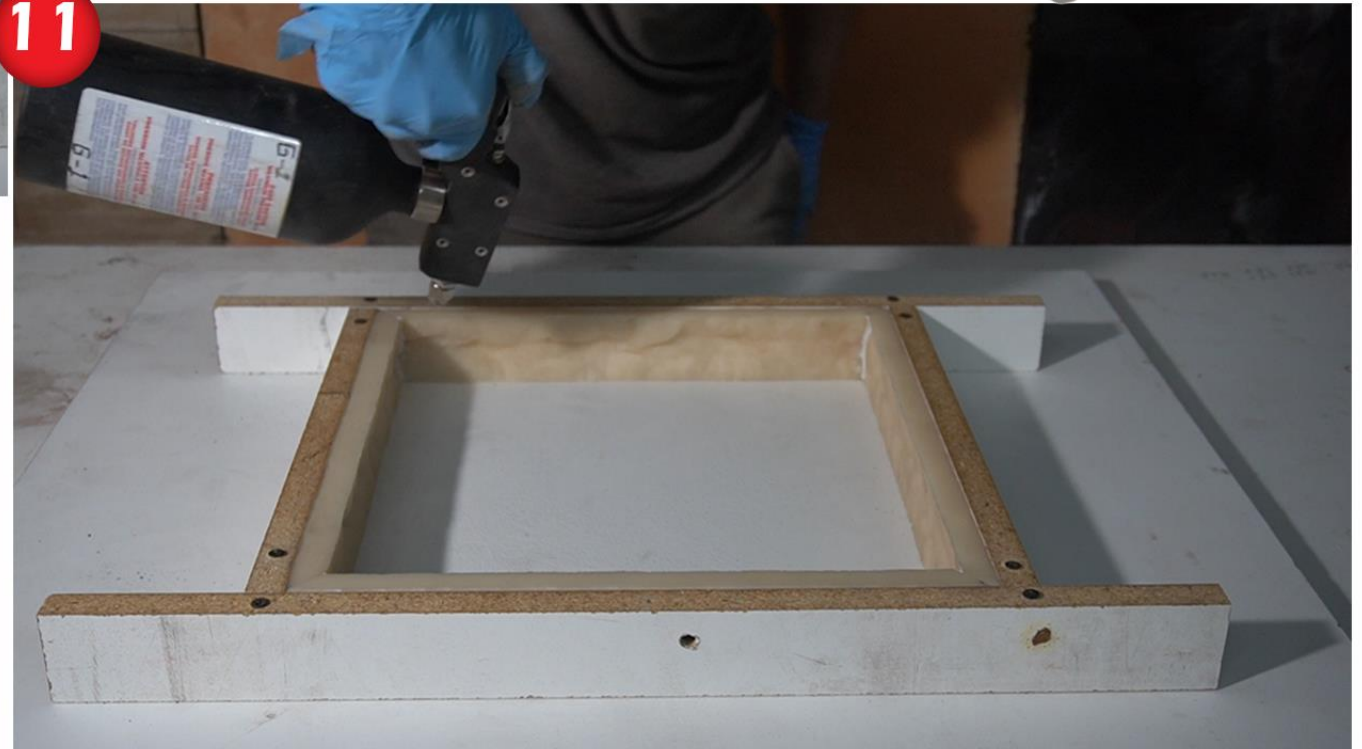




Use G1 Mold Release to ensure the mold wont stick to your concrete



11



The best tool for release application is a non-aerosol sprayer





12

**Add 2 parts sand
and 1 part cement
into a heavy duty
bucket**

**Be sure to mix all
the dry
ingredients before
adding water**





13

**Add your
water and
mix**

**My water
dosage was 20%
of the cement
weight**



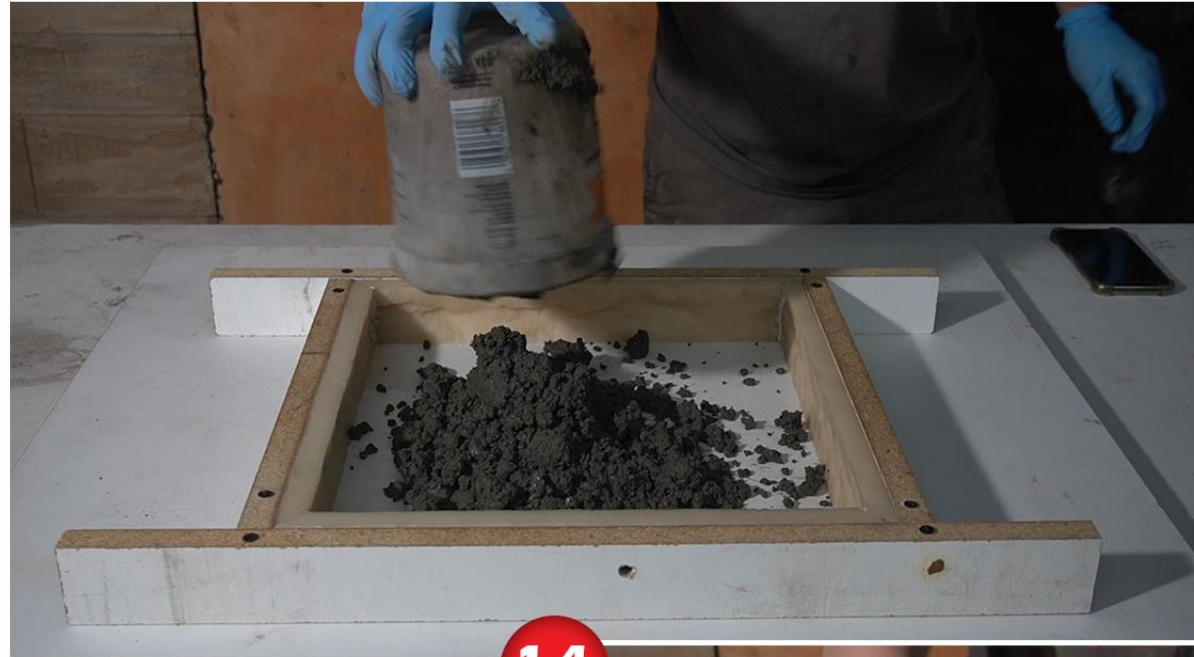


**This is the
consistency
you need**

**Make sure the
concrete is
moldable like
clay**



**Pack the
concrete
into the
mold**



**Be sure to pack
into the
corners and
sides really
well to avoid
bubbles on the
surface of the
capstone**



Use a trowel to make a peak on the concrete



Make sure the concrete is completely smooth for the stamping process

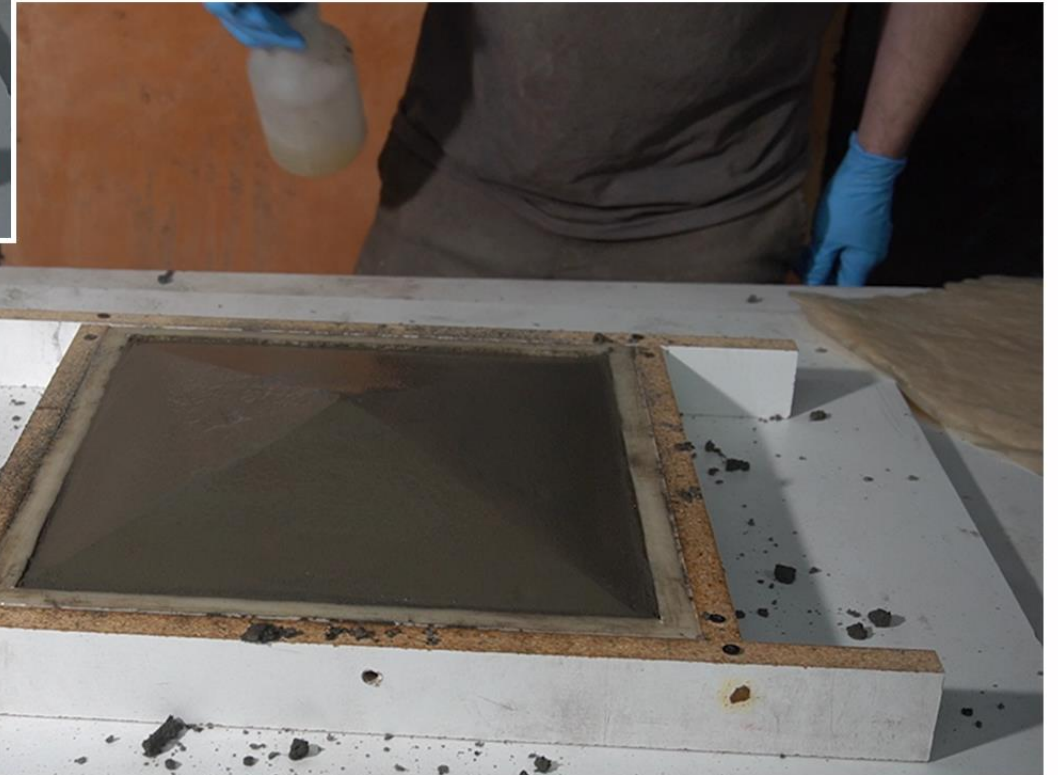
15



**You can start
stamping
once you can
touch the
concrete and
nothing is
left on your
finger**



**Spray stamp
release onto the
capstone and the
skin stamp**



**Stamp Release is
different from mold
release, make sure
not to confuse them!**





17



Use the small skin mat to stamp texture into the capstone

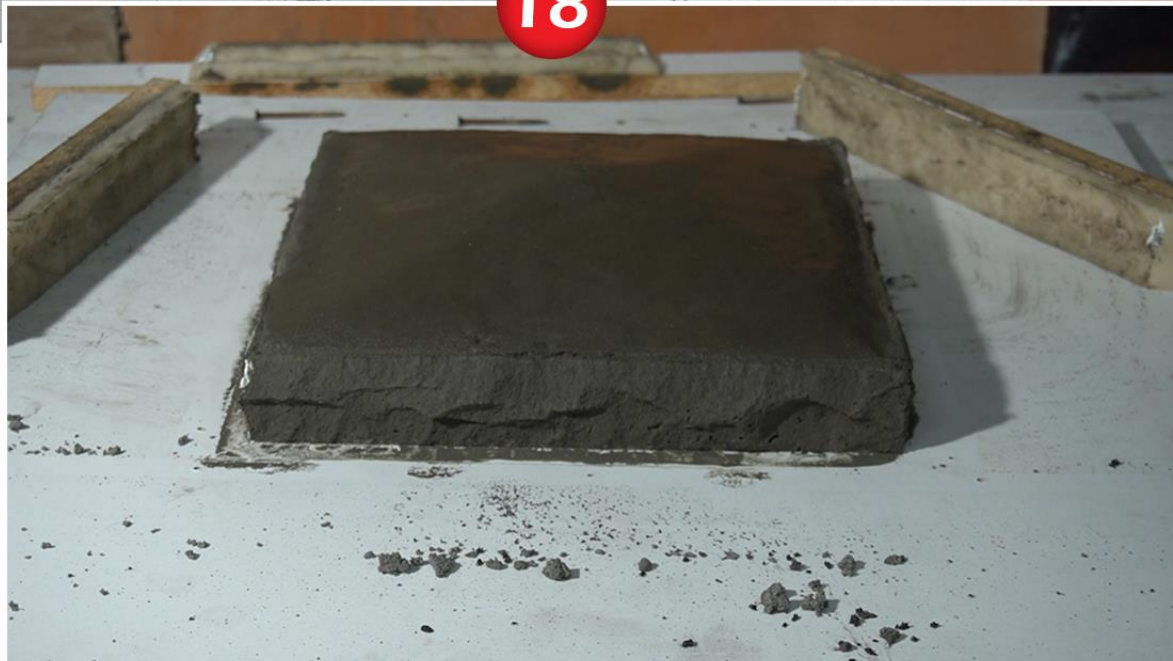
Try to keep the shape of your corners while stamping



18



Once the concrete thickens, you could remove the form walls to speed up production



Use this time to touch up any imperfections on the capstone

**You can
leave it
the way it
is, and
now
you're
done!**

**But I am going
to spray a
stain to add
accent colors
and character
to my
capstone**

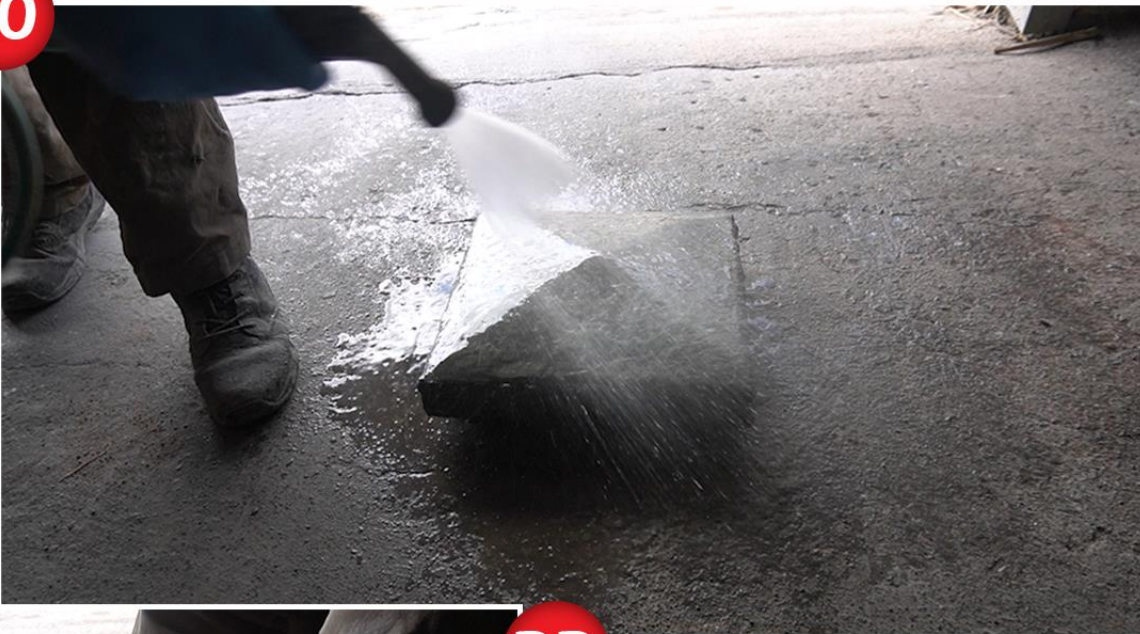
Domino EcoStain



**3 Parts Water
1 Part Stain**

First wet the capstone, and then use SCR to clean the concrete. Then wash off the capstone with water

20



SCR is an acid based concrete degreaser which cleans it, and opens its pores to accept stains and sealers better

21



22





**Spray the stain
onto your
capstone**

23

**EcoStain is concentrated,
so the less water you add,
the darker your stain will
be. I used 3 parts water
and 1 part stain**



If you don't like the way the stain looks, you can move it around



Use a wet sponge to move the stain

24

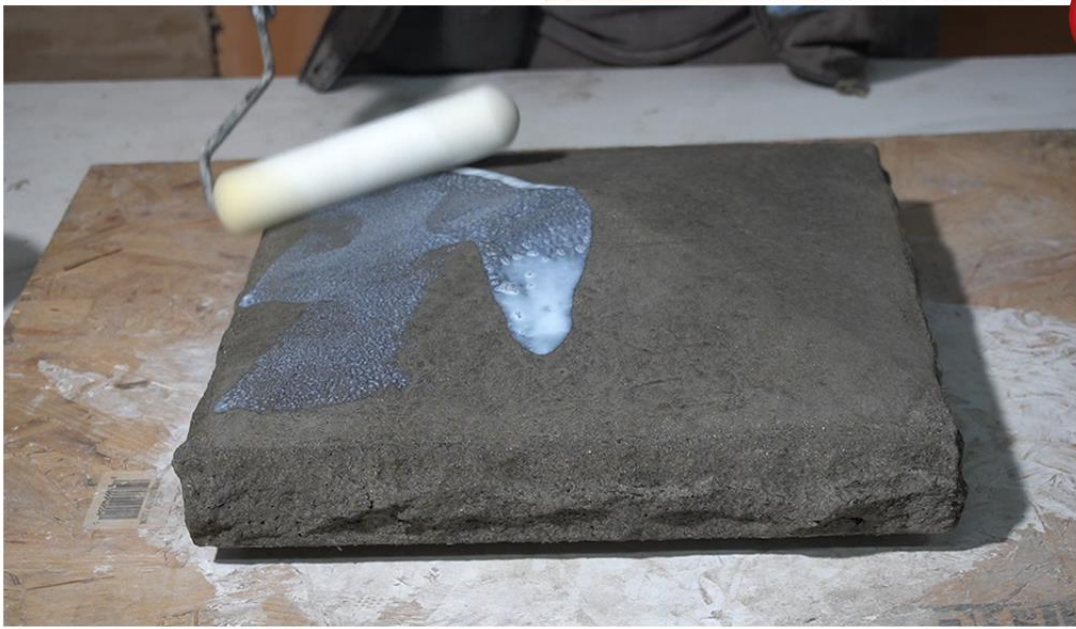


With water based stains, we recommend using a sealer



This keeps the stain from washing away with water and fading from UV radiation

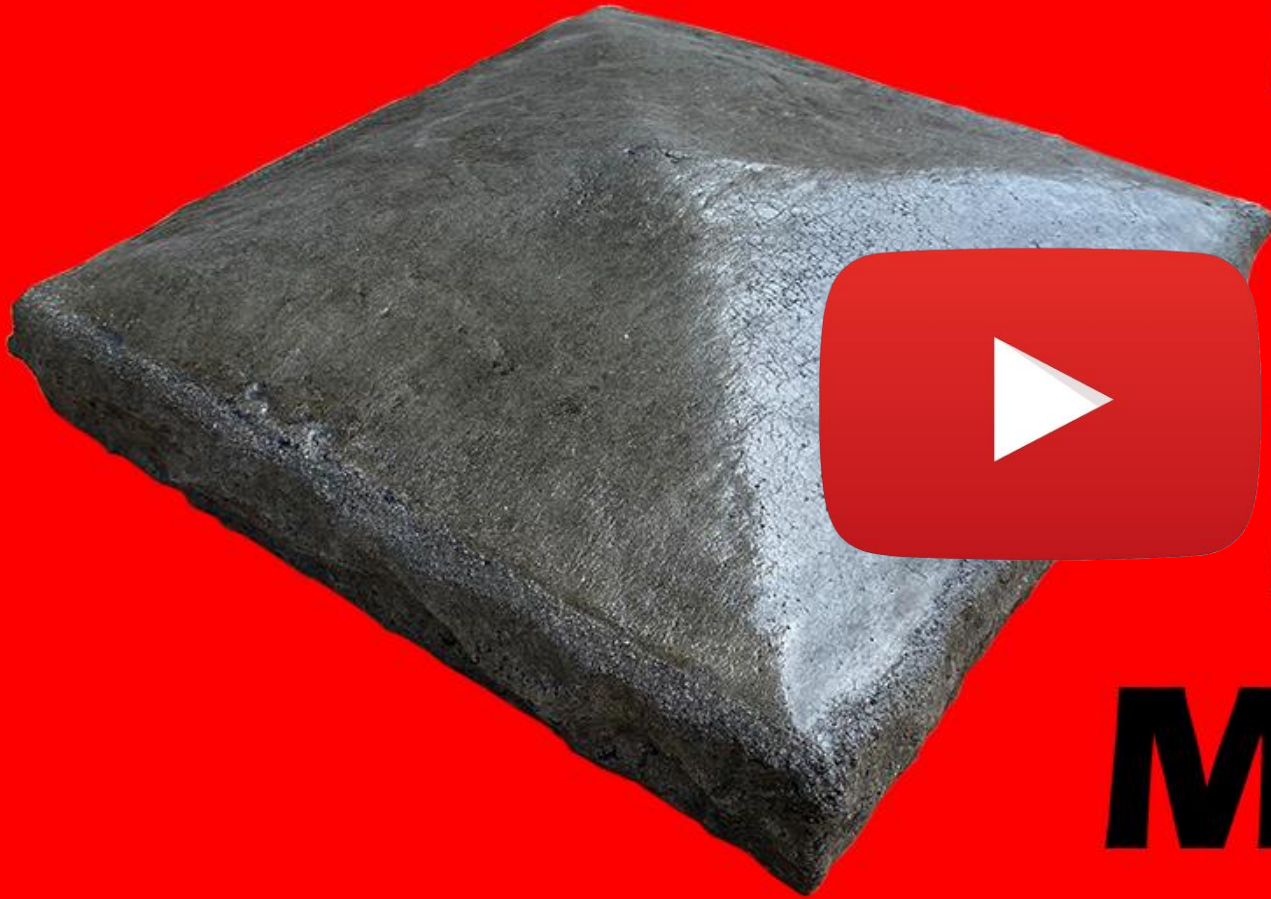
25



**Congratulations!! Your
capstone is finished!!**



Watch the full video here



**New
&
Easy
Method**