

FAKE STONE?



WHAT YOU WILL NEED:

SM 1923



Sure
Bond



Sure
Stamp

Color Packs



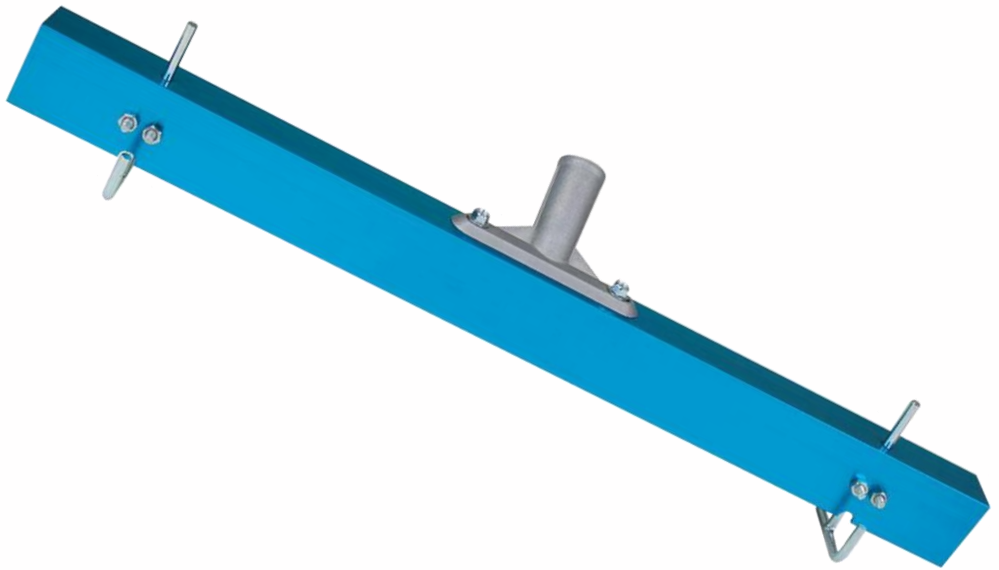
Mixer

Heavy Duty Bucket



GSR

Release



Gauge
Rake



Pool
Trowel

SCR



Touch-
Up
Wheel

Pump
Sprayer





HS200 Sealer



Epoxy Glide Roller

Eco Stain





Prep Work

Prep work is the most important part of any overlay installation.

Improper/insufficient prep work will ultimately cause in overlay failure, delamination and chipping. Even brand new concrete needs a small amount of prep for a proper bond between the concrete and the overlay.



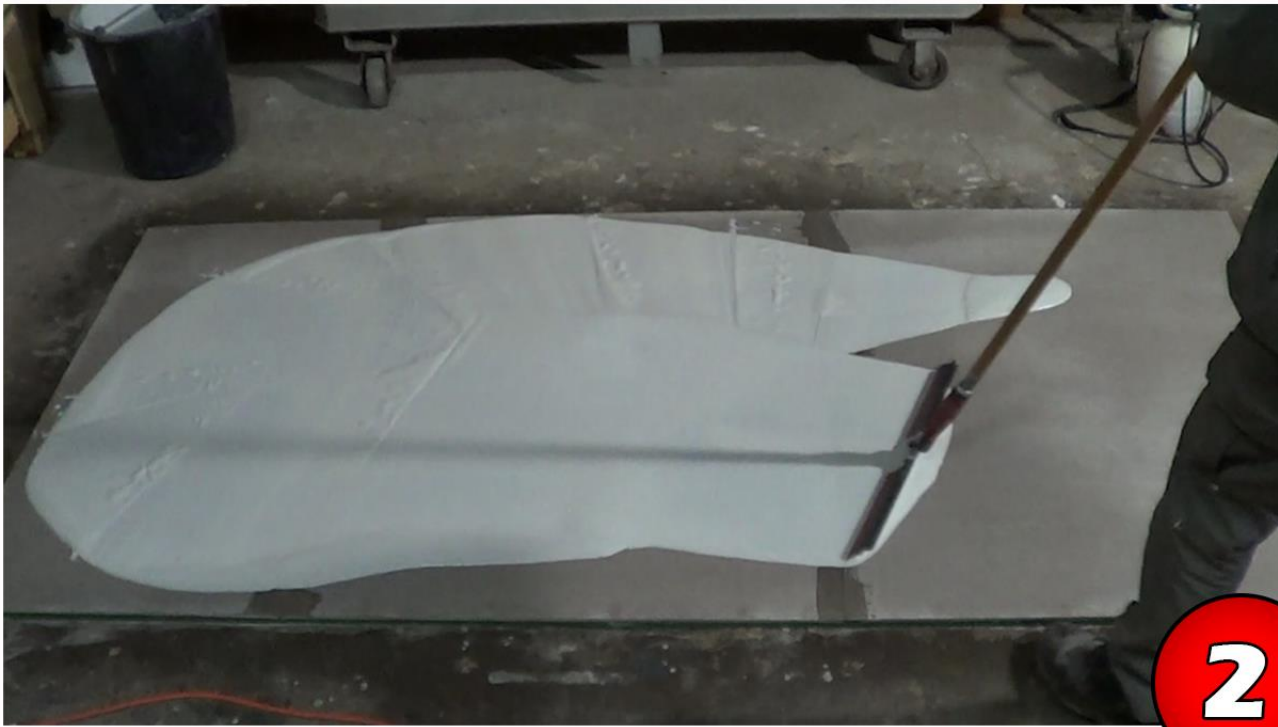
Any existing concrete must be grinded to expose the pores and to remove any surface contaminates.

1

Any holes, cracks or imperfections must be patched before the overlay application



**Then SureBond
is applied to the
prepped
concrete**



2



**SureBond is a primer
which ensures a
proper bond between
the overlay and
concrete**



SureStamp

SureStamp is a super durable stamped concrete overlay. It is formulated specifically to adhere to existing concrete, a feat which regular concrete can never accomplish. The mix is a white concrete slurry which can be pigmented to a wide range of colors with the SureCrete Color Packs. The dosage rate is 1 color pack per bag of SureStamp. The Water dosage is 2.5-3.5 quarts per bag but we always recommend starting with the minimum amount and adding water if need be.



**Mix the color pack
into the water first
for proper pigment
distribution**

3

**The color I
used is
“Smoke”**





Then mix in your SureStamp in with the pigmented water

Pour the material in gradually for easier/faster mixing.

4





Dry material is still stuck to the sides and bottom of the bucket.

5

Scrape the sides/bottom and then mix one last time





Spread the material at the desired height with a gauge rake

6

The thickness needs to be just enough to exceed the height from the lowest to the highest point on the stamp.



**Smooth the
material with
a pool trowel**



7

**Any imperfections
on the surface might
translate into the
stamped texture**





Stamping

The SM 1923 stamp series is a slate textured stamp series. You can purchase them separately or in sets of 5 or 8. The amount of stamps you actually need should be enough to span the width of your concrete slab, plus two more to continue the next row of stamps.



You can start stamping when you can press your finger into it, but nothing sticks to your finger

8

The time will always depend on weather conditions. The hotter it is, the faster the material sets





Spray GSR release agent on to both the SureStamp and the stamps

9

The release ensures no material gets stuck to the stamp mats



Start stamping the concrete



10

**Use a tamper if
the material
cured too much**



Continue stamping with the other stamps



11

Each stamp color was casted from different stones to minimize repetition



In tight to reach areas a floppy mat may be used



12

They are slightly smaller than the rigid stamps for ease of handling



**Remove stamps
from the
concrete once
tamped**



13

**I applied too much
SureStamp and some
got squeezed out
between the stamps**



**The joints can be
patched and
corrected with a
touch up wheel**



14





Staining

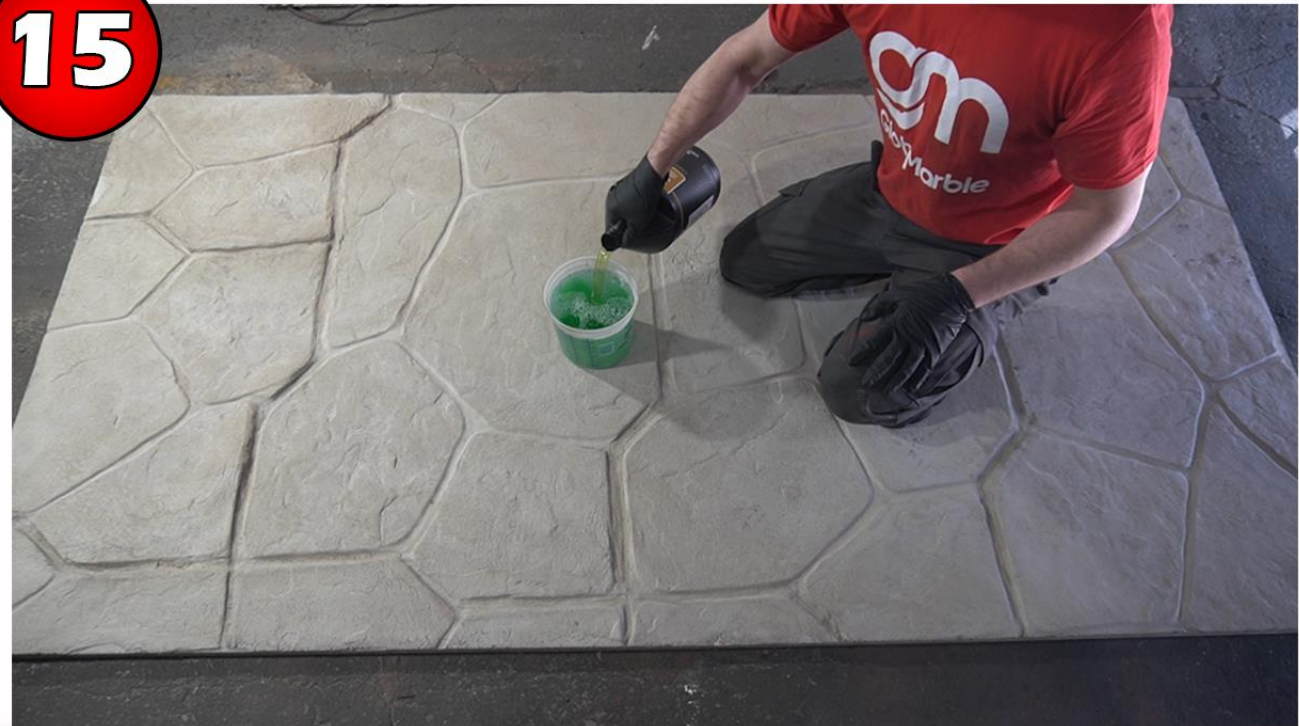
Staining is a secondary coloring method which accents the stones and makes them look 100X more natural. EcoStain is a water based stain which is very easy to alter the appearance of unlike acid based stains. If the color has not settled where you want it to, you may use a wet sponge to manipulate the stain even after it has already dried.



The oily release agent must be removed before moving forward

15

Dilute the SCR degreaser 3 parts water to 1 part SCR



**Scrub it into the
concrete surface
with a thick
bristle brush**



16

**Keep the SCR wet
and do not let it
dry. If it starts
drying spray it with
some more water**



**Dry SCR might
damage or
discolor the
concrete**



17

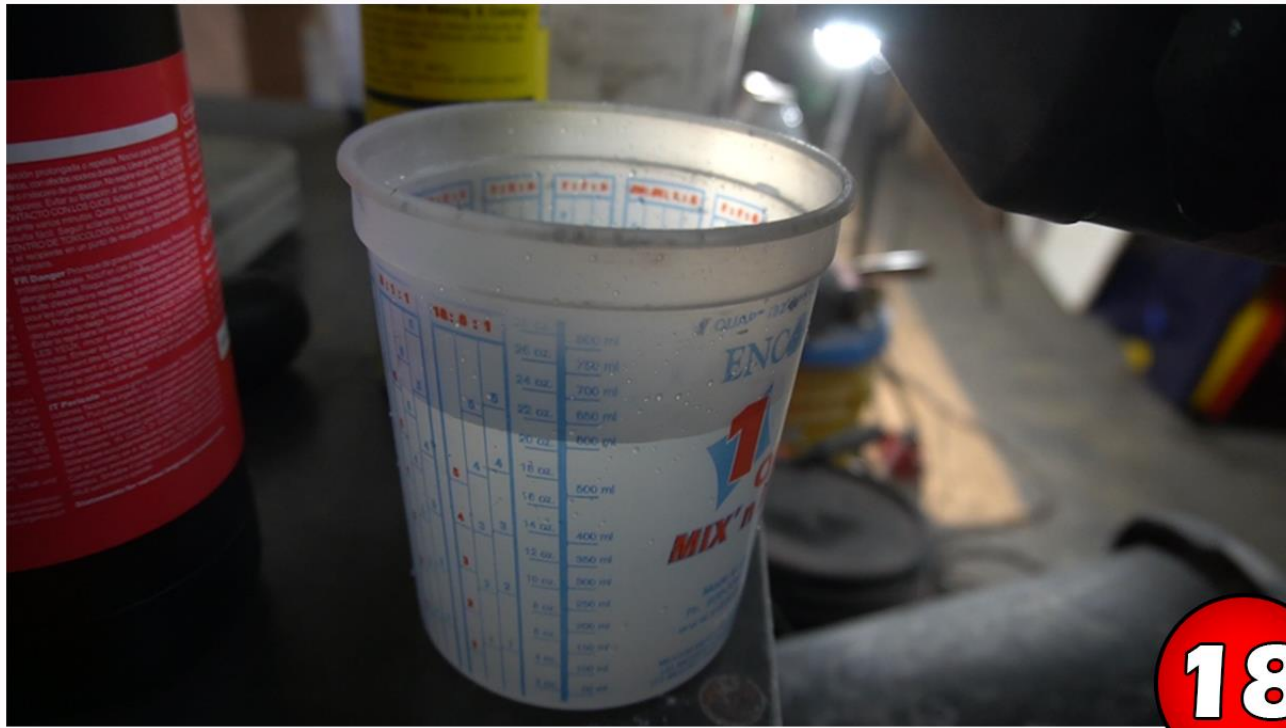
**Once thoroughly
scrubbed, wash
the SCR off of the
SureStamp**



The EcoStain is a powerful concentrate which can be diluted with water to different strengths.

18

To match the color chart, dilute it at a 3:1 ratio





**Pour the EcoStain
into a pump
sprayer and pump
it up full of air**

19

**Pump sprayers allow
a continuous spray
of material while
holding down the
trigger**



**Spray the
stain onto
the concrete**



20

**The color I used
was "Titanium
Gray"**





If desired, use a secondary color for a bit of variety

21

The color I used is "Kayak"



OPTIONAL

**Color the
grout lines**



22



**I find that
darker colored
grout lines look
most natural**



Sealing

A sealer must be applied not only to lock in the color of the concrete, but also to protect it from abrasions / UV radiation. Any sealer will give the concrete a color enhancing effect similar to the effect of water. The sealer must be applied 7 days after the pouring of the SureStamp to ensure all the moisture has escaped



**Once dry,
you can seal
the concrete**

23

**Be sure to backroll to
ensure even coverage
and eliminate roller
marks**





**D
O
N
E**

24



**D
O
N
E**



TO WATCH THE FULL VIDEO, CLICK HERE

FAKE STONE?

